

RNAV (GPS) RWY 9

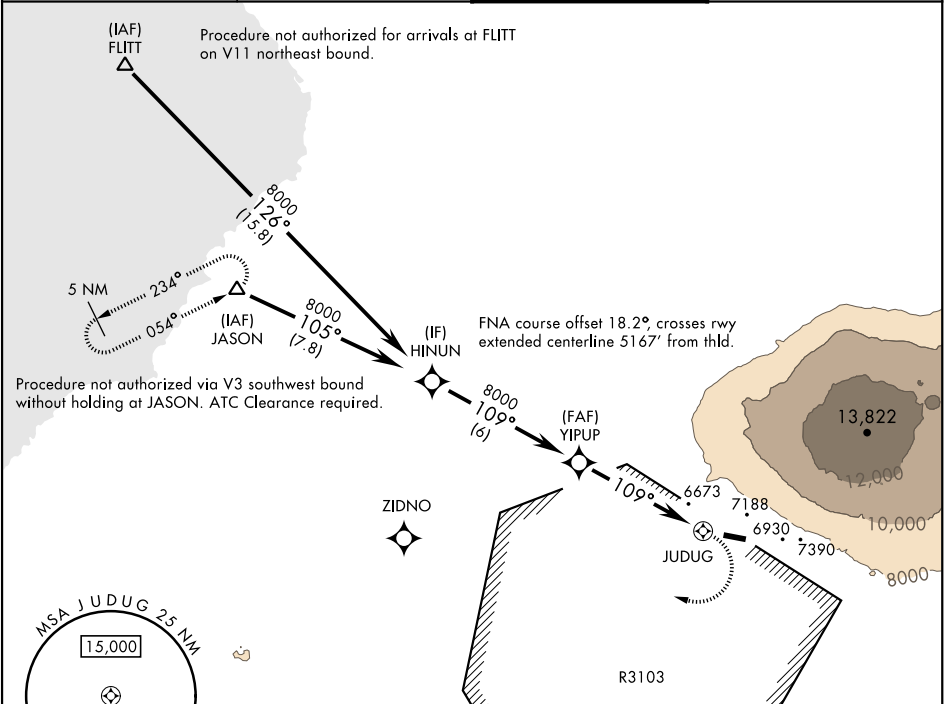
APCH CRS	Rwy Idg	3696
109°	TDZE	6168
	Arpt Elev	6190

AL-17449 [USA]

BRADSHAW AAF (PHSF)

RNP APCH - GPS	MISSED APPROACH: Climbing right turn to 8700 direct ZIDNO and on track 316° to JASON and hold.
▼ *Circling not authorized at night. ▲NA *Circling not authorized N of Rwy 09-27. Helicopter visibility reduction below ¾SM not authorized.	

ATIS★ 124.7 293.225	HONOLULU CENTER★ 118.45 278.3	TOWER★ 119.275 (CTAF) 236.6	GND CON★ 121.7 0 226.675
------------------------	----------------------------------	--------------------------------	-----------------------------



VGSi and descent angles not coincident (VGSi Angle 3.00/TCH 30).		8700	ZIDNO	tr 316°	JASON
CATEGORY	A	B	C	D	
LNAV MDA	7300-1¼ 1132 (1200-1¼)	7300-1½ 1132 (1200-1½)	7300-3 1132 (1200-3)	NOT AUTHORIZED	
CIRCLING★	7300-1¼ 1110 (1200-1¼)	7700-1½ 1510 (1600-1½)	NOT AUTHORIZED		

MIRL Rwy 09-27

RNAV (GPS) RWY 9

PAC, 07 AUG 2025 to 02 OCT 2025

PAC, 07 AUG 2025 to 02 OCT 2025