

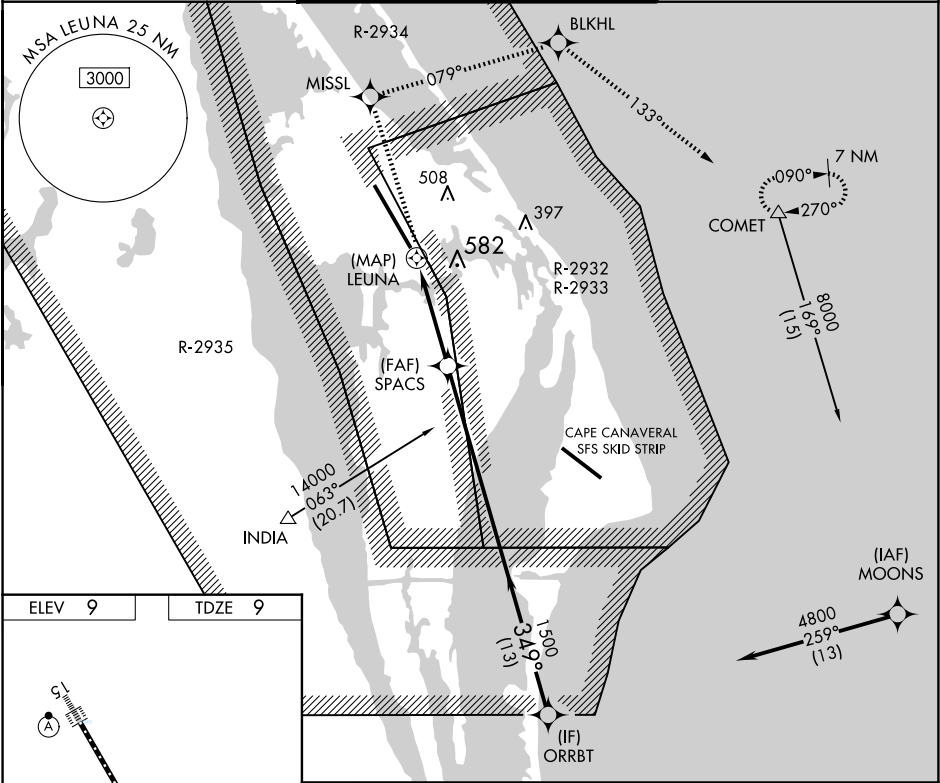
APP CRS	Rwy Idg	15001
349°	TDZE	9
	Apt Elev	9

RNAV (GPS) RWY 33

SPACE FLORIDA LAUNCH AND LANDING FACILITY (TTS)

RNP APCH-GPS.	ALSF-2	MISSED APPROACH: Climb to 8000 direct MISSL and right turn on track 079° to BLKHL and on track 133° to COMET and hold, continue climb-in-hold to 8000.
<div><div>T</div><div>A</div></div> <div>Rwy 33 helicopter visibility reduction below 1 SM NA. Inop table does not apply. Use Melbourne altimeter setting.</div>	<div><div>A</div><div></div></div>	

ORLANDO APP CON	NASA TOWER ★	GND CON
134.95 281.425	128.55 (CTAF) 284.0	121.75



ELEV 9	TDZE 9	8000	MISSL	BLKHL	COMET	ORRBT
		↑	✧	✧	△	
			tr 079°	tr 133°		
		SPACS				4800
		LEUNA				Procedure Turn NA
		3.01° TCH 55				1500
		0.5				4 NM
		13 NM				
CATEGORY	A	B	C	D	E	
LNAV MDA	540-1 530 (600-1)		540-1¼ 530 (600-1¼)			
CIRCLING	540-1 531 (600-1)		1020-3 1011 (1100-3)			