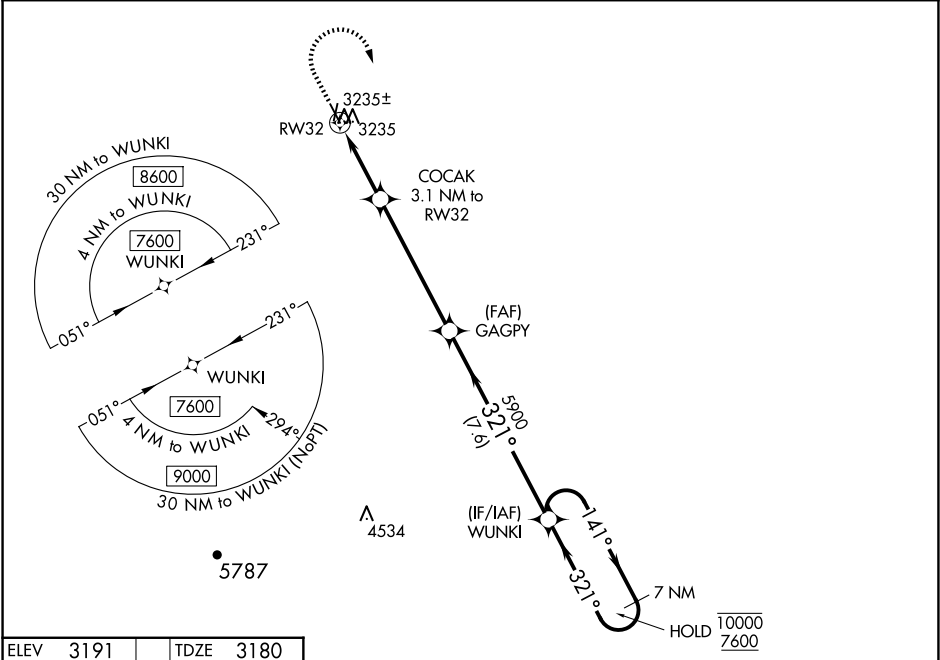


WAAS CH <b>82728</b> <b>W32A</b>	APP CRS <b>321°</b>	Rwy Idg TDZE <b>3180</b> Apt Elev <b>3191</b>
--	------------------------	---

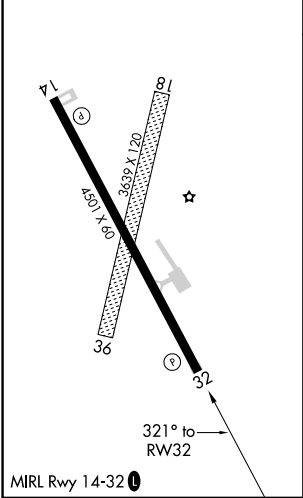
RNAV (GPS) RWY 32

BELLE FOURCHE MUNI (EF'C)

RNP APCH.		MISSED APPROACH: Climb to 3800 then climbing right turn to 7600 direct WUNKI and hold. Continue climb-in-hold to 7600.
NA	Baro-VNAV NA. Use Ellsworth altimeter setting.	
DENVER CENTER <b>127.95 338.2</b>		AUNICOM <b>122.8 (CTAF) 0</b>



ELEV 3191	TDZE 3180
-----------	-----------



3800

↑

7600

↗

WUNKI

✧

VGSI and RNAV glidepath not coincident  
(VGSI Angle 3.00/TCH 33).

7 NM  
Holding Pattern

\*LNAV only

RW32

↙

COCAK

3.1 NM to RW32

GAGPY

5900

WUNKI

↗

141° →

10000

← 321°

7600

4200\*

↘

5900

GP 3.00°

TCH 40

3.1 NM

5.3 NM

7.6 NM

CATEGORY	A	B	C	D
LPV DA	3553-1 373 (400-1)			NA
LNAV/VNAV DA	3558-1 378 (400-1)			NA
LNAV MDA	3660-1	480 (500-1)	3660-1 <sup>3</sup> / <sub>8</sub> 480 (500-1 <sup>3</sup> / <sub>8</sub> )	NA
CIRCLING	3780-1 589 (600-1)	3820-1 629 (700-1)	3820-1 <sup>3</sup> / <sub>4</sub> 629 (700-1 <sup>3</sup> / <sub>4</sub> )	NA

NC-1, 07 AUG 2025 to 04 SEP 2025

NC-1, 07 AUG 2025 to 04 SEP 2025