

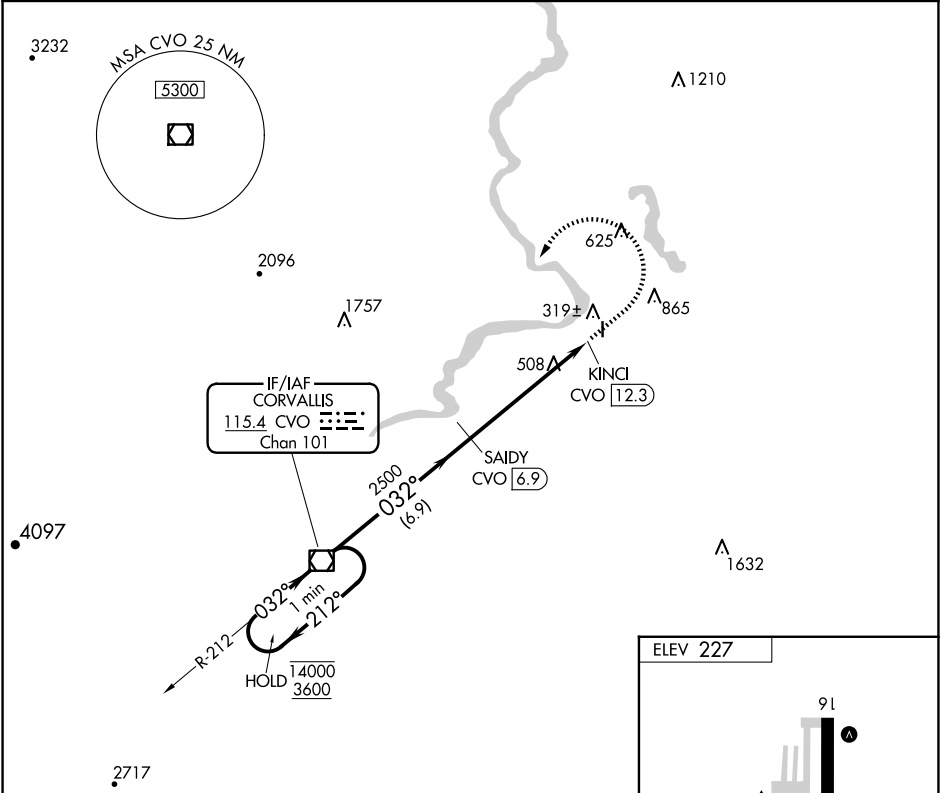
VOR/DME CVO 115.4 Chan 101	APP CRS 032°	Rwy Idg TDZE Apt Elev N/A N/A 227
--	------------------------	---

VOR-A

ALBANY MUNI (S12)

DME required.	MISSED APPROACH: Climb to 1300 then climbing left turn to 3600 on CVO VOR/DME R-032 to CVO VOR/DME and hold.
<div><div>V</div><div>Rwy 16 and 34 helicopter visibility reduction below 1 SM NA. When</div></div> <div><div>NA</div><div>local altimeter setting not received, use Corvallis altimeter setting.</div></div>	

AWOS-3PT 119.925	CASCADE APP CON ★ 127.5 348.7	UNICOM 122.725 (CTAF) 0
----------------------------	---	-----------------------------------



NoPT for arrival on CVO VOR/DME airway radials R-154 and R-177.

