

WAAS

CH **65899**

**W11A**

APP CRS

**114°**

Rwy Idg

**3601**

TDZE

**6**

Apt Elev

**6**

**RNAV (GPS) RWY 11**

MERRITT ISLAND (COI)

RNP APCH.

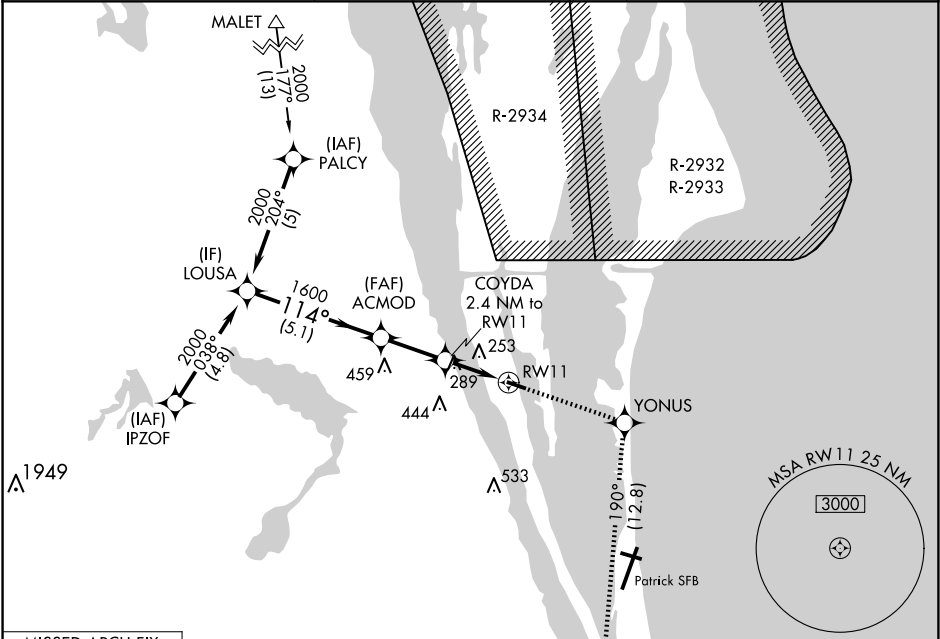
▼

NA

Rwy 11 helicopter visibility reduction below 1 SM NA. When local altimeter setting not received, use Melbourne altimeter setting and increase LPV DA to 329 and all MDA 40 feet, increase LPV all Cats visibility  $\frac{1}{8}$  mile. Night landing: Rwy 11 NA.

MISSED APPROACH: Climb to 3000 direct YONUS and on track 190° to MLB VOR/DME and hold.

AWOS-3PT <b>119.025</b>	ORLANDO APP CON <b>134.95 281.425</b>	UNICOM <b>122.975 (CTAF) 0</b>
----------------------------	------------------------------------------	-----------------------------------



MISSED APCH FIX

Procedure NA for arrivals on MLB VORTAC airway radials 276 CW 329.

ELEV 6

TDZE 6

VGSI and RNAV glidepath not coincident (VGSI Angle 3.00/TCH 42).

LOUSA

2000

114°

1600

ACMOD

1600

COYDA

2.4 NM to RW11

RW11

YONUS

3000

tr 190°

MLB

\*LNAV only.

GP 3.00°

TCH 33

5.1 NM

2.4 NM

2.4 NM

CATEGORY	A	B	C	D
LPV DA	291-1	285 (300-1)	NA	NA
LNNAV MDA	600-1	594 (600-1)	NA	NA
CIRCLING	600-1	620-1	NA	NA
	594 (600-1)	614 (700-1)		

MIRL Rwy 11-29 0