

VOR/DME CPN
116.05
Chan **107 (Y)**

APP CRS
309°

Rwy Idg
TDZE
Apt Elev
N/A
N/A
5034

VOR-A
BOWMAN FLD (3U3)

DME required.

▼
NA
-25°C

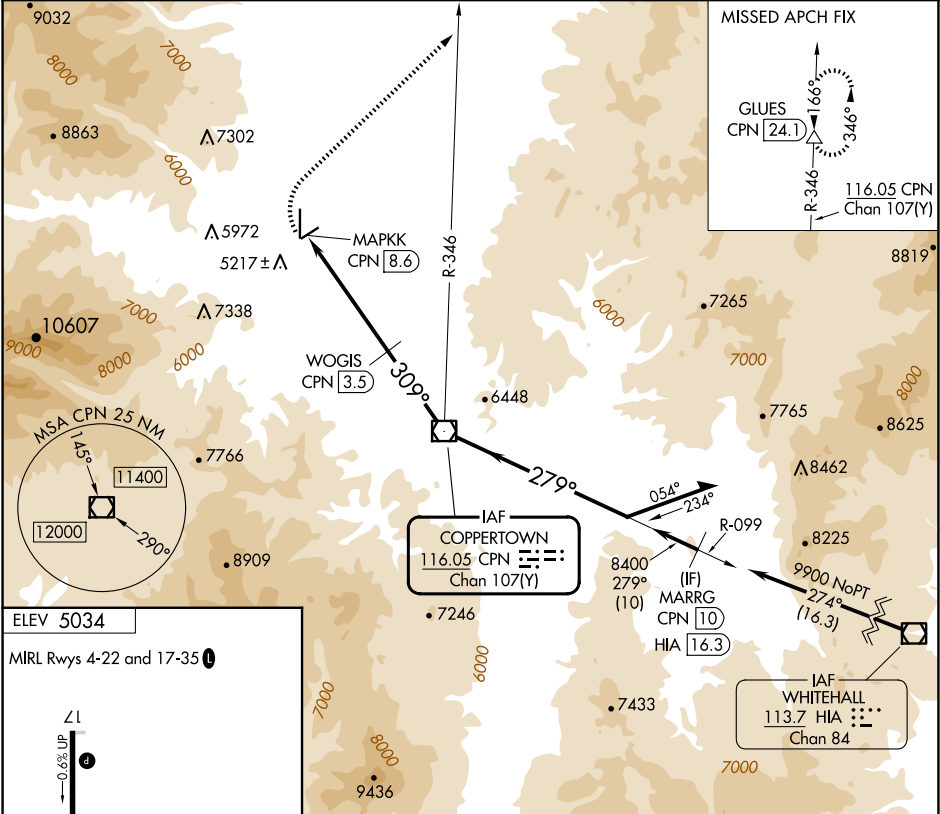
When local altimeter settings not received, use Butte altimeter setting and increase all MDAs 120 feet.
Circling NA for Cats C and D west of Rwy 17-35.

MISSED APPROACH: Climbing right turn to 9200 on heading 030° and on CPN VOR/DME R-346 to GLUES/CPN 24.1 DME and hold.

AWOS-3PT
124.175

SALT LAKE CENTER
132.4 338.3

UNICOM
122.8 (CTAF)



ELEV 5034

MIRL Rwy 4-22 and 17-35

9200	CPN R-346	GLUES
hdg 030°		△
WOGIS CPN 3.5		
MAPKK CPN 8.6		
309°		
7440		
8400		
Remain within 10 NM		
099°		
279°		
10200		
309°		
7440		
8400		
5.1 NM		
3.5 NM		

CATEGORY	A	B	C	D
CIRCLING	6120-1¼ 1086 (1100-1¼)	6240-1½ 1206 (1300-1½)	6240-3	1206 (1300-3)