

APP CRS
311°

Rwy Idg
TDZE
Apt Elev
5034

N/A
N/A
5034

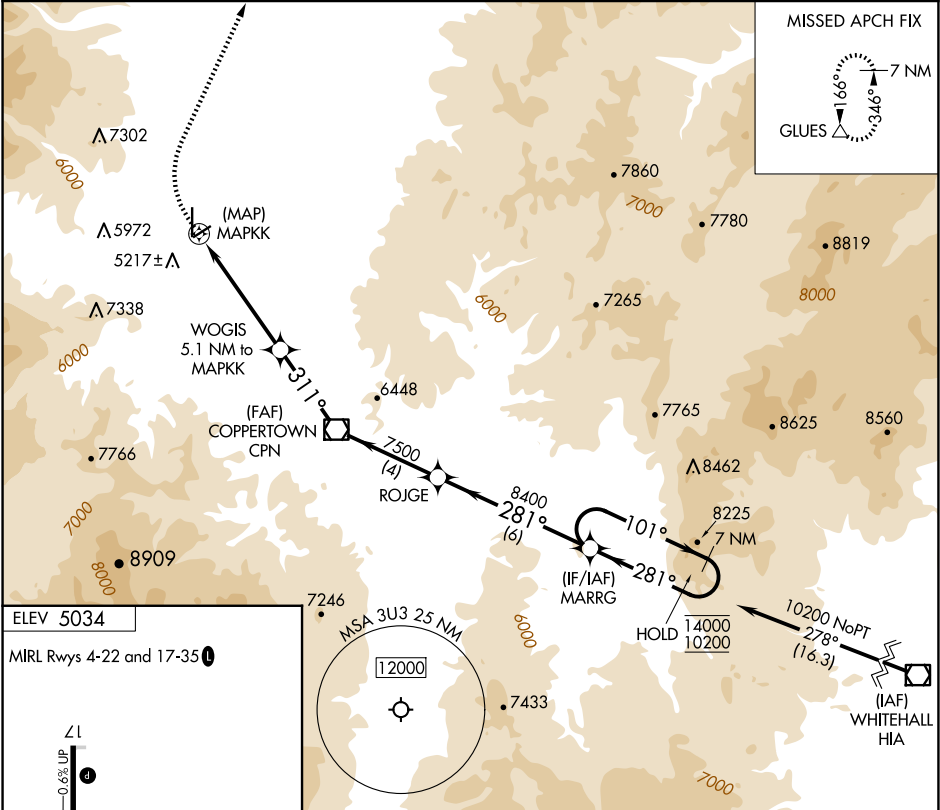
RNAV (GPS)-B
BOWMAN FLD (3U3)

RNP APCH - GPS.

When local altimeter setting not received, use Butte altimeter setting and increase all MDAs 120 feet.
Circling NA for Cats C and D west of Rwy 17-35.

MISSED APPROACH: Climbing right turn to 9200 direct GLUES and hold.

AWOS-3PT 124.175	SALT LAKE CENTER 132.4 338.3	UNICOM 122.8 (CTAF) 0
---------------------	---------------------------------	--------------------------



ELEV 5034

MIRL Rwy 4-22 and 17-35 0

L1
6010 X 7.5
-0.6% UP

L2
4074 X 60
1.0% UP

35

311°

9200	GLUES	MARRG	7 NM Holding Pattern	
WOGIS 5.1 NM to MAPKK	ROJGE	14000	10200	
MAPKK	7500	281°	101°	
6620	8400	281°	101°	
5.1 NM	3.5 NM	4 NM	6 NM	
CATEGORY	A	B	C	D
CIRCLING	6120-1¼ 1086 (1100-1¼)	6240-1½ 1206 (1300-1½)	6240-3 1206 (1300-3)	6640-3 1606 (1700-3)