

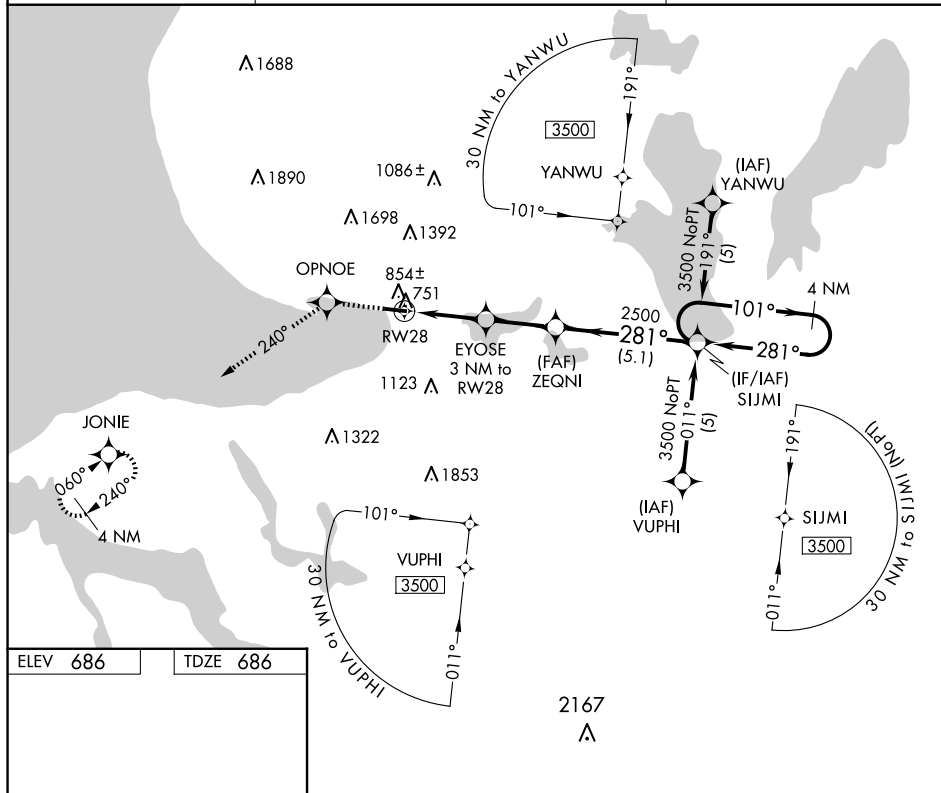
APP CRS 281°	Rwy Idg 3705 TDZE 686 Apt Elev 686
------------------------	---

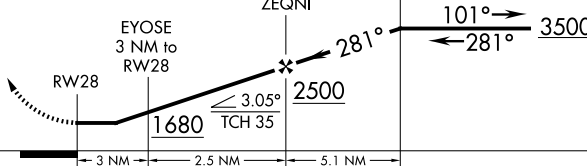
RNAV (GPS) RWY 28
HARBOR SPRINGS (MGN)

**T
A** DME/DME RNP-0.3 NA. Helicopter visibility reduction below 1 SM NA. When local altimeter setting not received, use Pellston altimeter setting and increase all MDAs 40 feet. Procedure NA at night.

MISSED APPROACH: Climb to 3400 direct
OPNOE and via 240° track to JONIE and hold.

AWOS-3P 119.925	MINNEAPOLIS CENTER 134.6 354.05	UNICOM 122.8 (CTAF) 0
---------------------------	---	--



3400 ↑	OPNOE ✧ tr 240°	JONIE ✧	VGSI and descent angles not coincident (VGSI Angle 4.00/TCH 35).		
			4 NM Holding Pattern		
CATEGORY	A		B	C	D
LNAV MDA	1120-1		434 (500-1)	NA	
CIRCLING	1380-1 694 (700-1)		1500-1¼ 814 (900-1¼)	NA	