

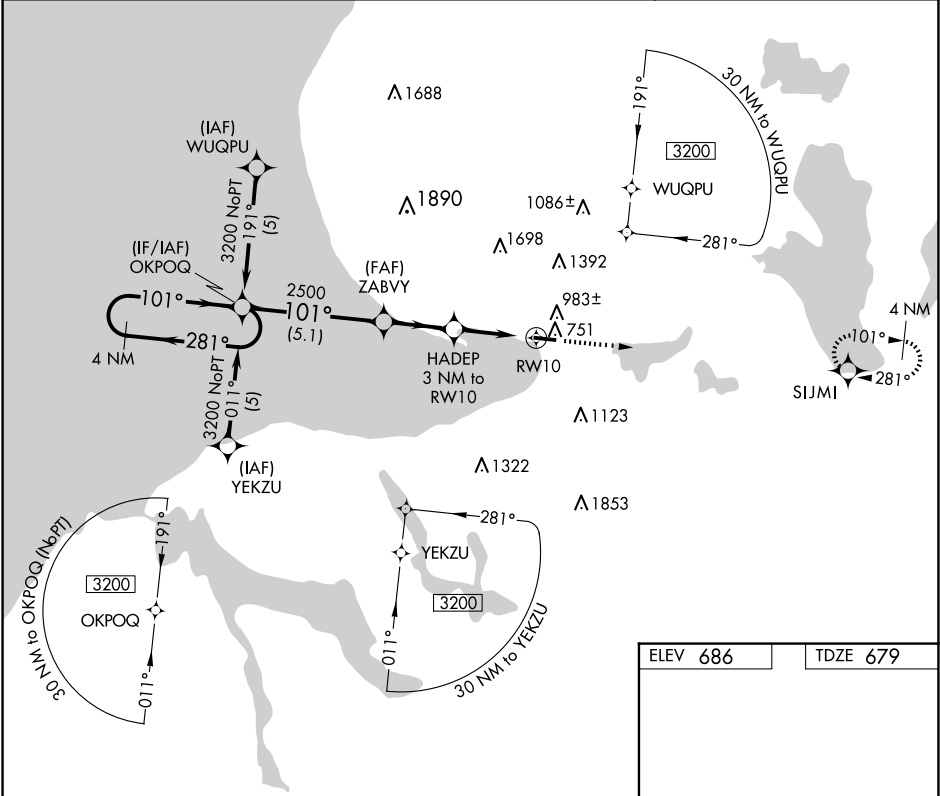
APP CRS 101°	Rwy Idg	3712
	TDZE	679
	Apt Elev	686

RNAV (GPS) RWY 10
HARBOR SPRINGS (MGN)

⚠ DME/DME RNP-0.3 NA. When local altimeter setting not received, use Pellston altimeter setting and increase all MDAs 40 feet. Procedure NA at night. Helicopter visibility reduction below 1 SM NA.

MISSED APPROACH: Climb to 3500 direct SIJMI and hold.

AWOS-3P 119.925	MINNEAPOLIS CENTER 134.6 354.05	UNICOM 122.8 (CTAF) 0
---------------------------	---	---------------------------------



4 NM Holding Pattern

VGSI and descent angles not coincident (VGSI Angle 3.50/TCH 28)

3200

281°

101°

OKPOQ

ZABVY

2500

3.05°

TCH 35

1680

HADEP 3 NM to RWY 10

RWY 10

5.1 NM

2.5 NM

3 NM

ELEV 686

TDZE 679

SIJMI

101°

4149 X 75

28

CATEGORY	A	B	C	D
LNAV MDA	1240-1	561 (600-1)	NA	NA
CIRCLING	1380-1 694 (700-1)	1500-1 ¼ 814 (900-1 ¼)	NA	NA

MIRL Rwy 10-28 0

EC-1, 07 AUG 2025 to 04 SEP 2025

EC-1, 07 AUG 2025 to 04 SEP 2025