

WAAS
CH **82419**
W15A

APP CRS
152°

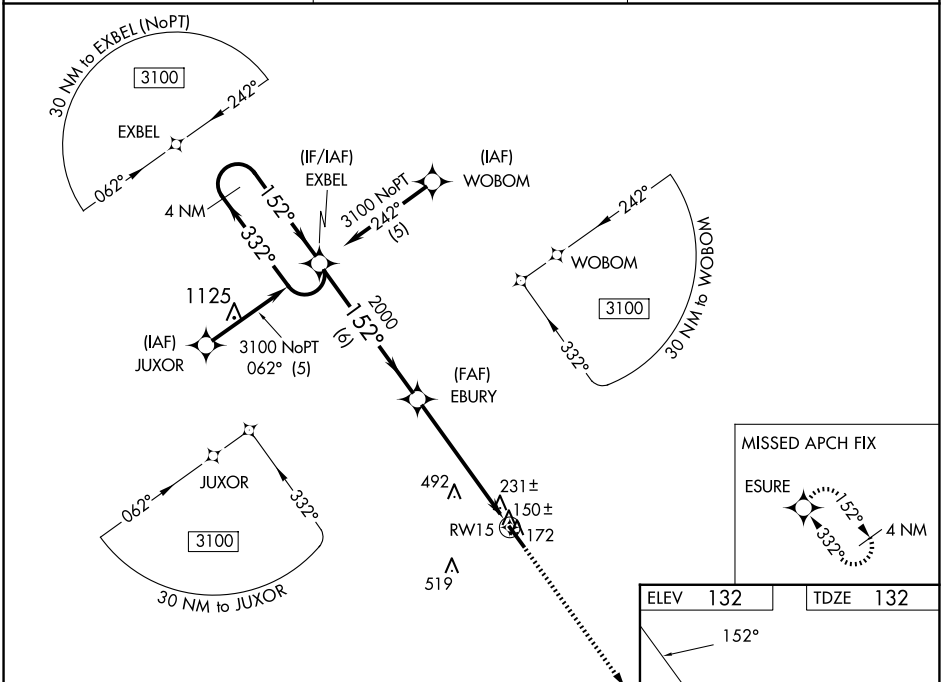
Rwy Idg
TDZE **132**
Apt Elev **132**

RNAV (GPS) RWY 15
CURTIS L BROWN JR FLD (EYF)

⚠ DME/DME RNP-0.3 NA. Visibility reduction by helicopters NA. When local altimeter setting not received, use Fayetteville, NC altimeter setting; increase LPV DA to 454 feet, LNAV/VNAV DA to 601 feet, and all MDAs 80 feet, and increase LPV and LNAV/VNAV all Cats visibility ¼ SM, LNAV Cats C and D and Circling Cats C and D visibility ¼ SM. Baro-VNAV and VDP NA when using Fayetteville, NC altimeter setting. For uncompensated Baro-VNAV systems, LNAV/VNAV NA below -15°C (5°F) or above 48°C (118°F).

MISSED APPROACH: Climb to 3100 direct ESURE and hold, continue climb-in-hold to 3100.

AWOS-3P 119.475	FAYETTEVILLE APP CON 133.0 290.25	UNICOM 122.8 (CTAF) 0
---------------------------	---	---------------------------------



4 NM Holding Pattern		VGSI and RNAV glidepath not coincident (VGSI Angle 3.00/TCH 32).		3100	ESURE
3100 ← 332°		152° →		152°	
GP 3.00° TCH 45		2000		2000	
		6 NM		4.6 NM	1.1 NM
CATEGORY	A	B	C	D	
LPV DA		382-1	250 (300-1)		
LNAV/VNAV DA		529-1½	397 (400-1½)		
LNAV MDA	660-1	528 (600-1)	660-1½ 528 (600-1½)	660-1¾ 528 (600-1¾)	
CIRCLING	660-1	528 (600-1)	880-2¼ 748 (800-2¼)	880-2½ 748 (800-2½)	

REIL Rwy 15 and 33 0

MIRL Rwy 15-33 0