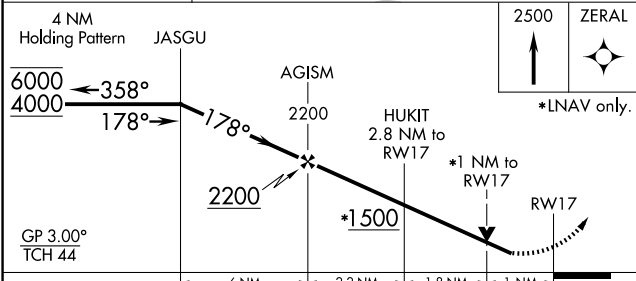
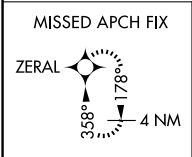
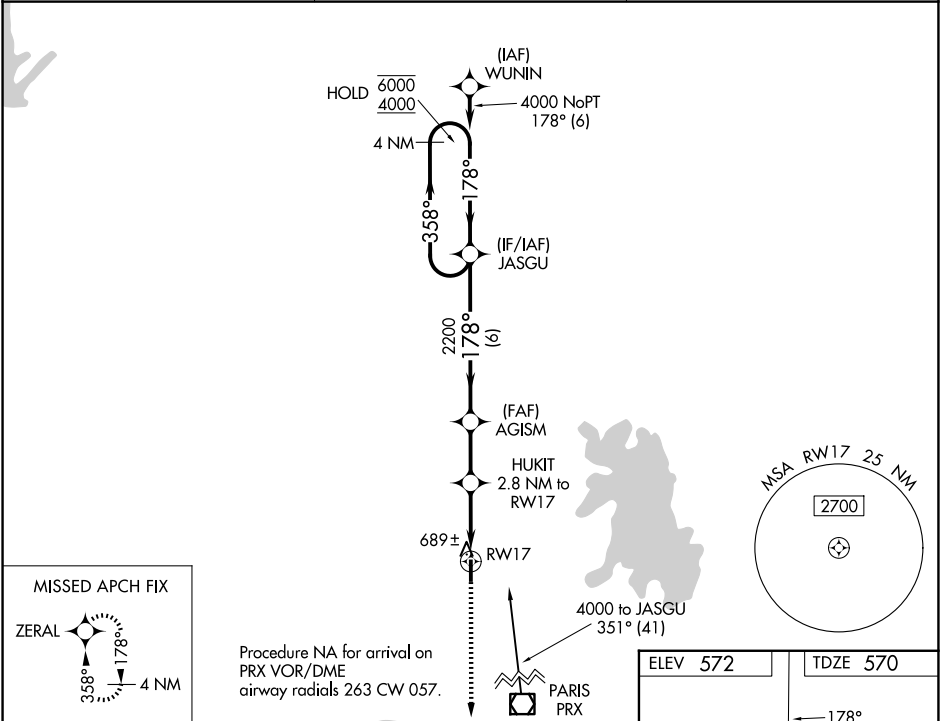


WAAS CH 50437 W17A	APP CRS 178°	Rwy Ldg TDZE Apt Elev	4007 570 572
--	------------------------	-----------------------------	---

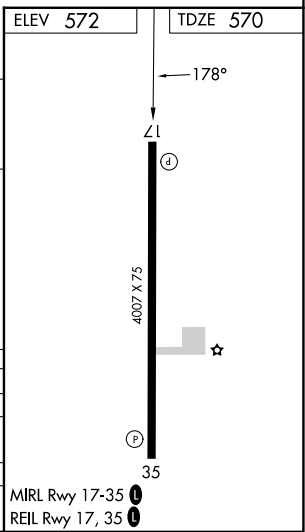
RNAV (GPS) RWY 17
STAN STAMPER MUNI (HHW)

RNP APCH. Circling Rwy 35 NA at night. Rwy 17 helicopter visibility reduction below 3/4 SM NA. For uncompensated Baro-VNAV systems, LNAV/VNAV NA below -16°C or above 54°C.	MISSED APPROACH: Climb to 2500 direct ZERAL and hold.
---	---

AWOS-3 119.025	FORT WORTH CENTER 124.875 370.95	UNICOM 122.8 (CTAF) 0
--------------------------	--	---------------------------------



CATEGORY	A	B	C	D
LPV DA		820-1	250 (300-1)	
LNAV/VNAV DA		870-1	300 (300-1)	
LNAV MDA		940-1	370 (400-1)	
CIRCLING	1220-1	648 (700-1)	1340-2 1/4 768 (800-2 1/4)	1340-2 1/2 768 (800-2 1/2)



SC-1, 07 AUG 2025 to 04 SEP 2025

SC-1, 07 AUG 2025 to 04 SEP 2025