

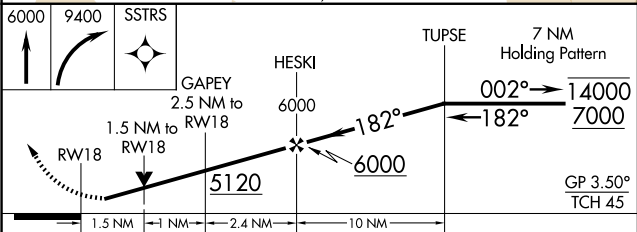
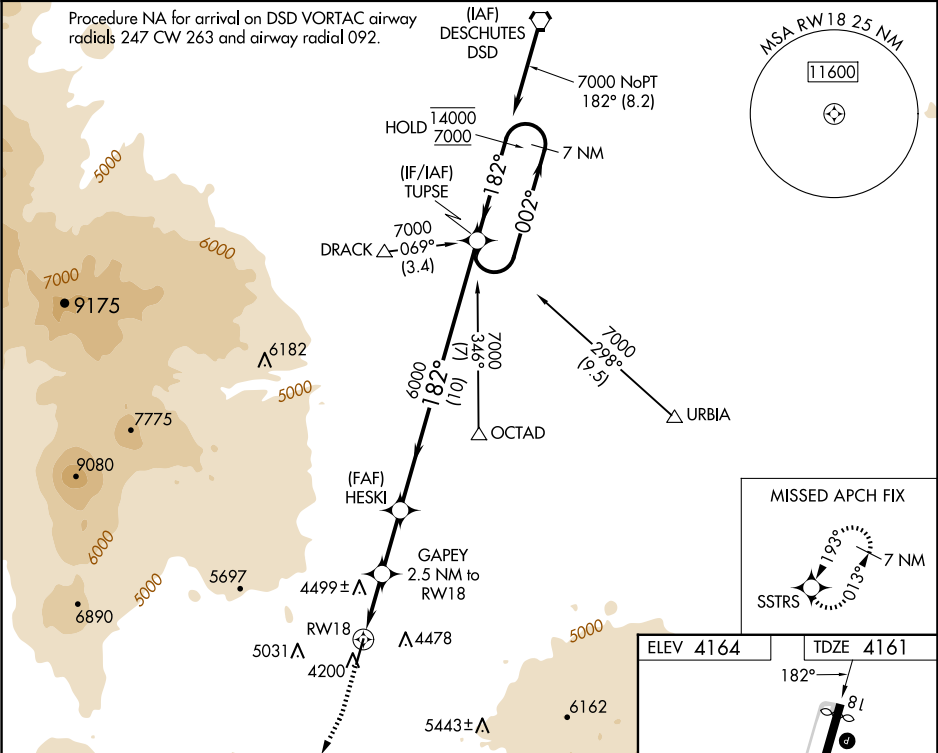
WAAS CH 77744 W18A	APP CRS 182°	Rwy Ldg TDZE 4161 Apt Elev 4164
----------------------------------------	------------------------	-----------------------------------------------------

RNAV (GPS) RWY 18

SUNRIVER (S21)

RNP APCH - GPS.	MISSED APPROACH: Climb to 6000 then climbing right turn to 9400 direct SSTRS and hold, continue climb-in-hold to 9400.
<div><div><div></div><div></div></div><div>Circling NA for Cat D west of Rwy 18-36. Rwy 18 helicopter visibility reduction below $\frac{3}{4}$ SM NA. For uncompensated Baro-VNAV systems, LNAV/VNAV NA below -23°C or above 41°C.</div></div>	

AWOS-3PT 128.325	SEATTLE CENTER 126.15 269.475	UNICOM 122.8 (CTAF) 0
----------------------------	-----------------------------------------	---------------------------------



CATEGORY	A	B	C	D
LPV DA		4431- $\frac{7}{8}$	270 (300- $\frac{7}{8}$)	
LNAV/VNAV DA		4760-1 $\frac{3}{4}$	599 (600-1 $\frac{3}{4}$)	
LNAV MDA	4760-1	599 (600-1)	4760-1 $\frac{3}{4}$	599 (600-1 $\frac{3}{4}$)
CIRCLING	4900-1 736 (800-1)	5140-1 $\frac{1}{2}$ 976 (1000-1 $\frac{1}{2}$)	5660-3	1496 (1500-3)

