

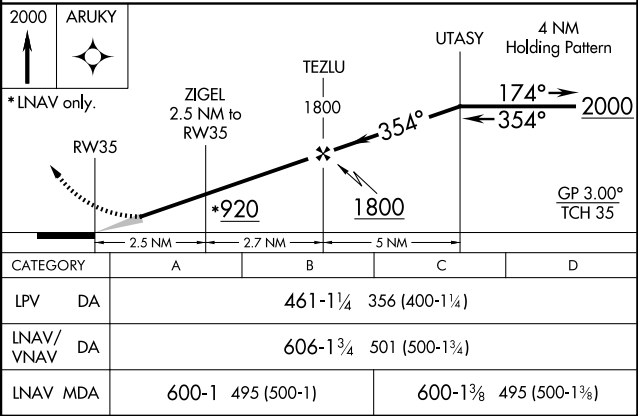
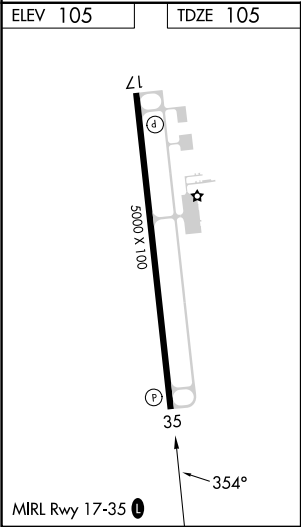
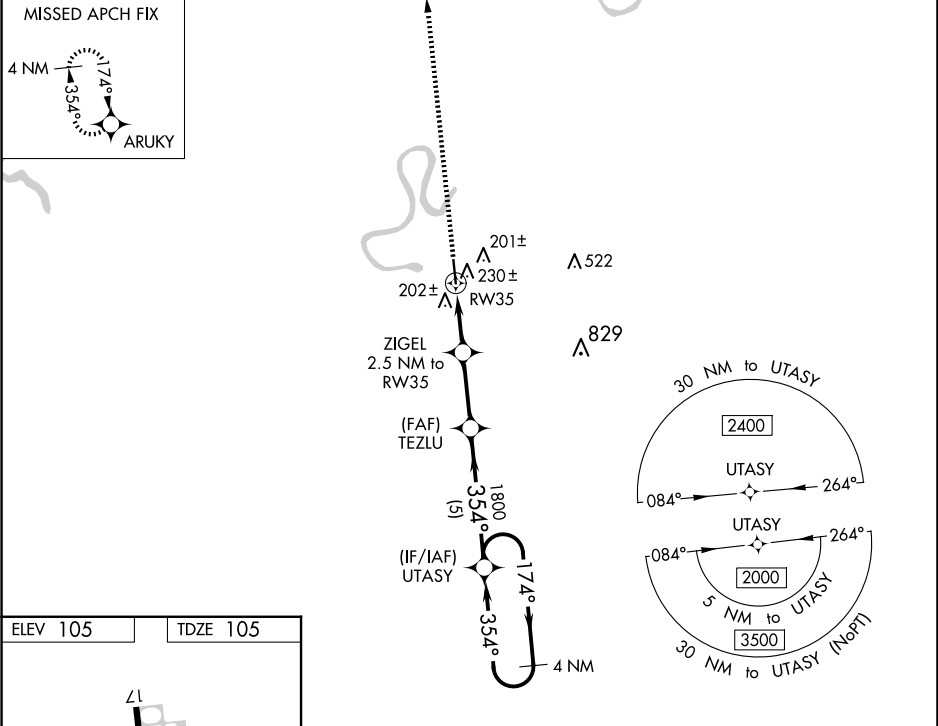
WAAS CH 99431 W35A	APP CRS 354°	Rwy Idg TDZE Apt Elev	5000 105 105
--	------------------------	-----------------------------	---

RNAV (GPS) RWY 35

YAZOO COUNTY (87I)

RNP APCH. ▼ ▲ NA Baro-VNAV NA. Use Madison altimeter setting; when not received, use Jackson altimeter setting and increase all DA 8 feet and all MDA 20 feet.	MISSED APPROACH: Climb to 2000 direct ARUKY and hold.
--	---

MEMPHIS CENTER 132.5 259.1	UNICOM 122.8 (CTAF) 0
--------------------------------------	---------------------------------



SC-4, 07 AUG 2025 to 04 SEP 2025

SC-4, 07 AUG 2025 to 04 SEP 2025