

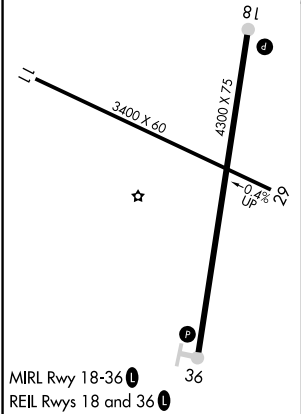
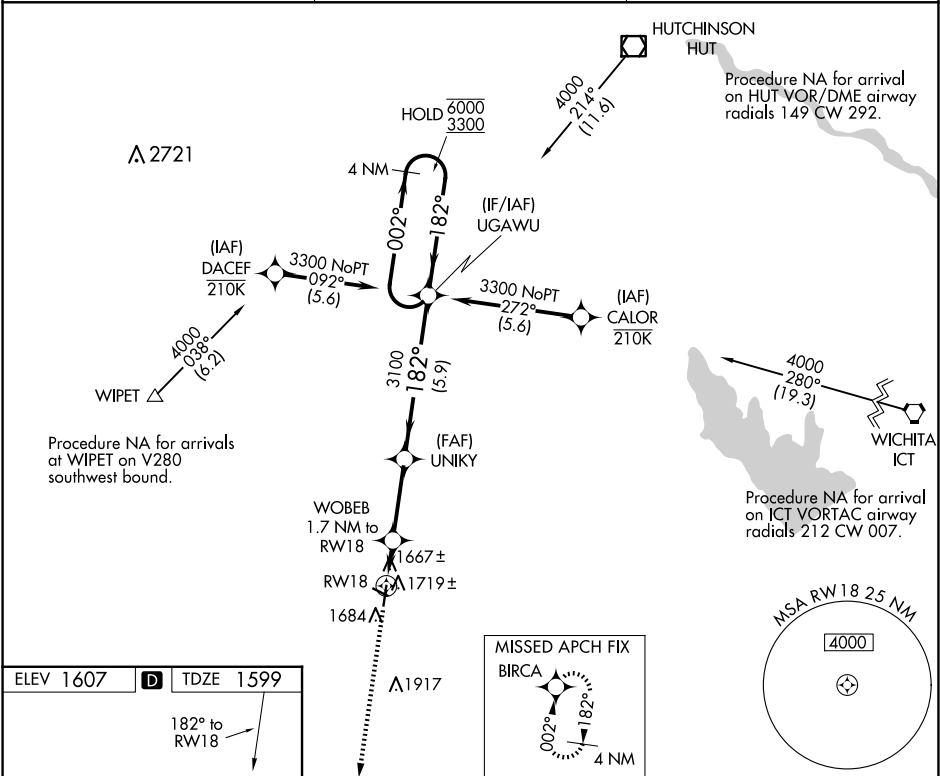
WAAS CH 77742 W18A	APP CRS 182°	Rwy Idg TDZE 1599 Apt Elev 1607
--	------------------------	---

RNAV (GPS) RWY 18

KINGMAN/CLYDE CESSNA FLD (9K8)

RNP APCH. ▼ Rwy 18 helicopter visibility reduction below $\frac{3}{4}$ SM NA. Circling Rwy 11, 29 NA at night.	MISSED APPROACH: Climb to 3600 direct BIRCA and hold.
--	--

AWOS-3PT 119.325	WICHITA APP CON 125.5 306.2	UNICOM 122.8 (CTAF) 0
----------------------------	---------------------------------------	--



3600	BIRCA	VGSI and descent angles not coincident (VGSI Angle 3.00/TCH 43).	4 NM Holding Pattern

NC-2, 07 AUG 2025 to 04 SEP 2025

NC-2, 07 AUG 2025 to 04 SEP 2025