

HEBER, UTAH

AL-6969 (FAA)

25219

APP CR  
179°

Rwy Ldg	N/A
TDZE	N/A
Apt Elev	5637

# RNAV (GPS)-A

## HEBER VALLEY (HCR)

RNP APCH.

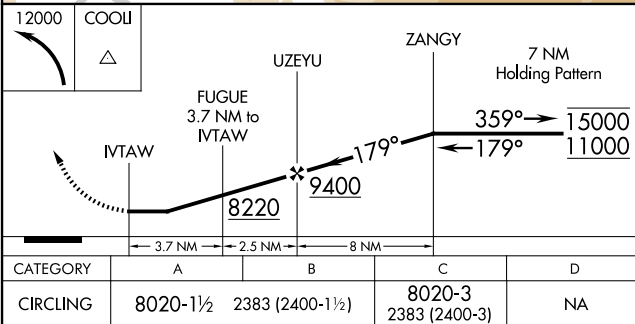
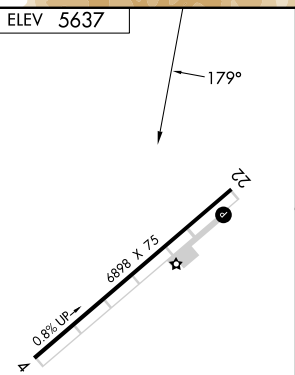
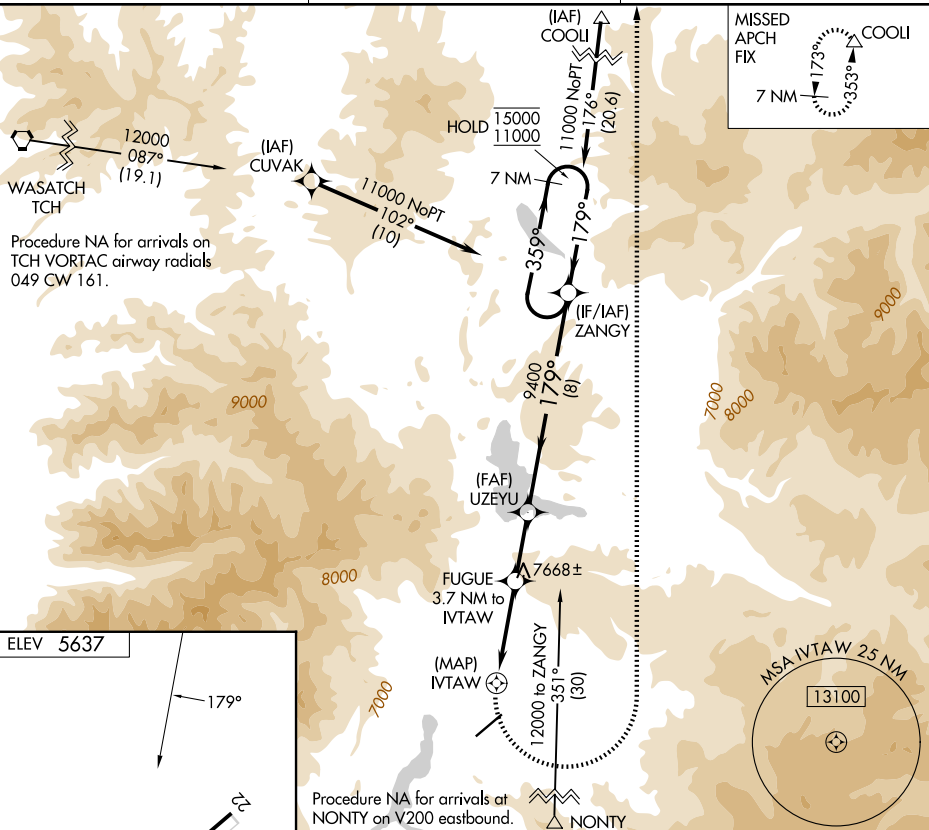


Circling NA south of Rwy 4-22.  
Circling Rwy 4 NA at night.

**MISSED APPROACH:** (Do not exceed 210K until turn completion)  
Climbing left turn to 12000 direct COOL and hold.

AWOS-3PT  
124.825

SALT LAKE CITY CENTER  
119.95 377.15

UNICOM  
122.8 (CTAF) **L**

HEBER, UTAH

Amdt 3A 15AUG19

40°29'N-111°26'W

HEBER VALLEY (HCR)

## RNAV (GPS)-A

SW-4, 07 AUG 2025 to 04 SEP 2025

SW-4, 07 AUG 2025 to 04 SEP 2025