

VORTAC EED	APP CRS	Rwy Idg
115.2	335°	8500
Chan 99		TDZE 707
		Apt Elev 707

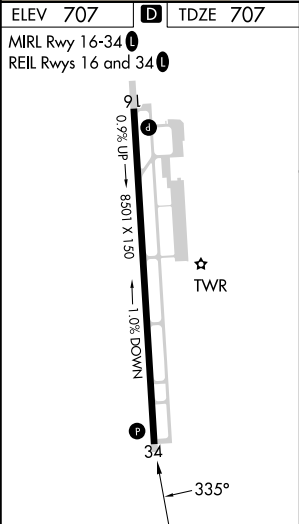
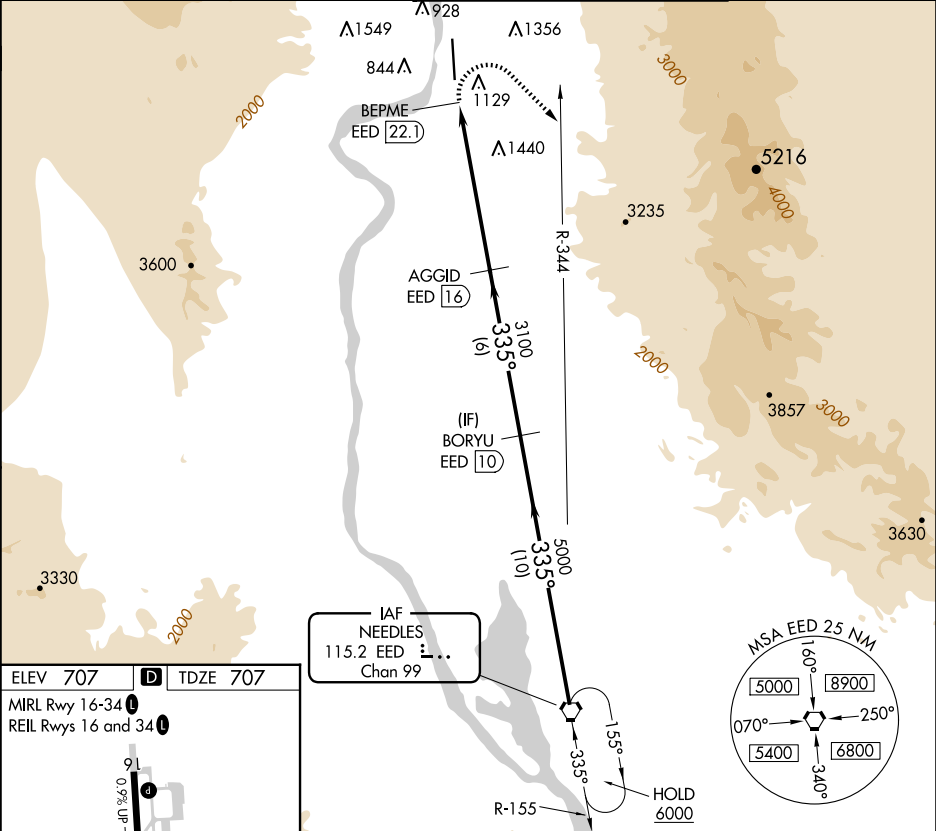
VOR RWY 34




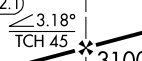



LAUGHLIN/BULLHEAD INTL (IFP)

Rwy 34 helicopter visibility reduction below ¼ SM NA.
DME required. Circling Rwy 16 NA at night.

MISSED APPROACH: Climbing right turn to 6000 on heading 120° and EED VORTAC R-344 to EED VORTAC and hold.

ATIS 119.825	LOS ANGELES CENTER 134.65 360.65	BULLHEAD TOWER★ 123.9 (CTAF) 0	GND CON 118.25
-----------------	-------------------------------------	-----------------------------------	-------------------



		EED R-344	EED 			EED VORTAC
		BEPME EED 22.1	AGGID EED 16	BORYU EED 10		
						
0.9		6.1 NM		6 NM	10 NM	
CATEGORY	A		B		C	D
S-34	2840-1¼ 2133 (2200-1¼)		2840-1½ 2133 (2200-1½)		2840-3	2133 (2200-3)
 CIRCLING	2840-1¼ 2133 (2200-1¼)		2840-1½ 2133 (2200-1½)		2840-3	2133 (2200-3)

