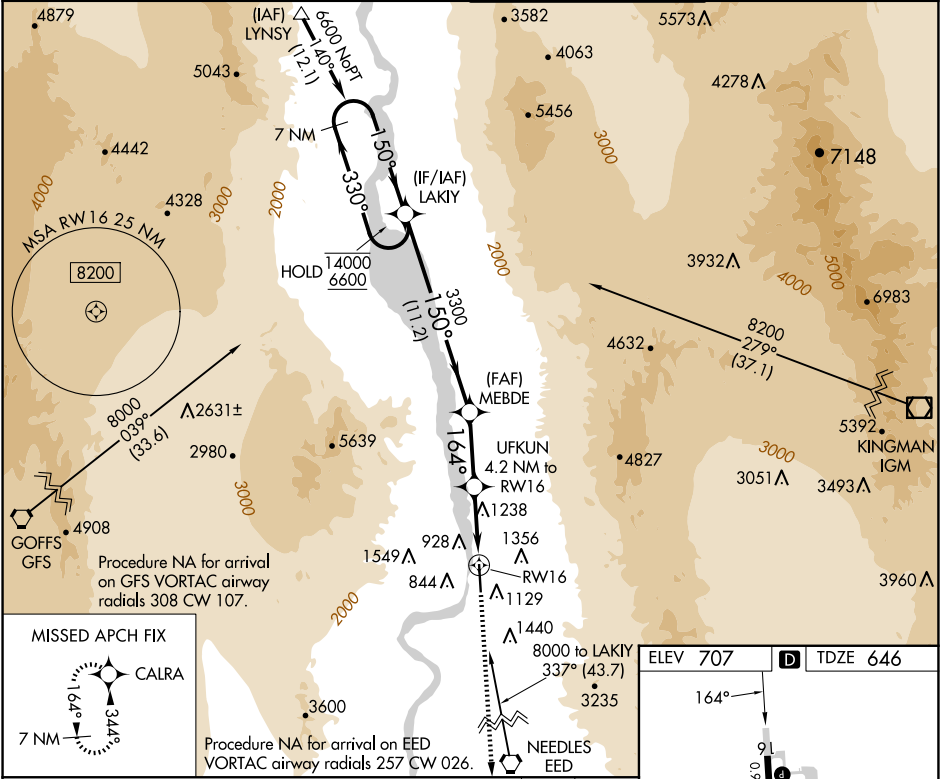


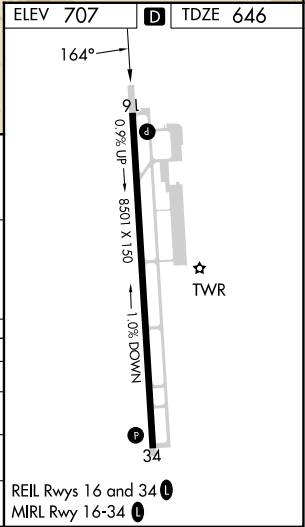
| | | | |
|--|------------------------|-----------------------------|---|
| WAAS CH 82624 W16A | APP CRS 164° | Rwy Idg TDZE Apt Elev | 8500 646 707 |
|--|------------------------|-----------------------------|---|

RNAV (GPS) RWY 16
LAUGHLIN/BULLHEAD INTL (IFP)

| | | | |
|---|--|---|--------------------------|
| RNP APCH - GPS. Procedure NA at night. Rwy 16 helicopter visibility reduction below 3/4 SM NA. Baro-VNAV NA. | | MISSED APPROACH: Climb to 6300 direct CALRA and hold, continue climb-in-hold to 6300. | |
| ATIS 119.825 | LOS ANGELES CENTER 134.65 360.65 | BULLHEAD TOWER★ 123.9 (CTAF) 0 | GND CON 118.25 |



| | | | | | |
|-----------------------------|-----------------------|-------------------------------|-------------------------------|-------------------------|------------|
| 7 NM Holding Pattern | | LAKY | MEBDE | UFKUN 4.2 NM to RW16 | 6300 CALRA |
| 14000 ← 330° 6600 → 150° | | 150° | 164° | 2.6 NM to RW16 | RW16 |
| GP 3.00° TCH 49 | | 3300 | 2020 | | |
| | | 11.2 NM | 4 NM | 1.7 NM | 2.6 NM |
| CATEGORY | A | B | C | D | |
| LPV DA | | 1048-1 1/8 | 402 (400-1 1/8) | | |
| RNAV/VNAV DA | | 1500-2 1/2 | 854 (800-2 1/2) | | |
| RNAV MDA | 1500-1 854 (800-1) | 1500-1 1/4 854 (800-1 1/4) | 1500-2 1/2 854 (800-2 1/2) | | |
| CIRCLING | 1500-1 793 (800-1) | 1560-1 1/4 853 (900-1 1/4) | 1800-3 1093 (1100-3) | 2340-3 1633 (1700-3) | |



SW-4, 07 AUG 2025 to 04 SEP 2025

SW-4, 07 AUG 2025 to 04 SEP 2025