

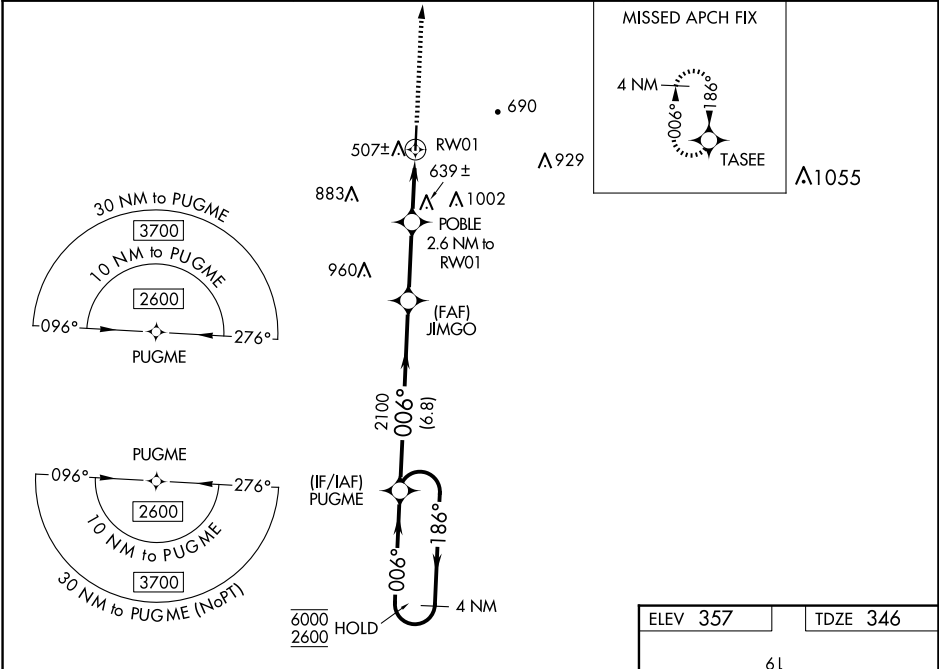
WAAS CH 42623 W01A	APP CRS 006°	Rwy Idg TDZE 346 Apt Elev 357
--	------------------------	---

RNAV (GPS) RWY 1

RICHARD ARTHUR FLD (M95)

RNP APCH.	Procedure NA at night. Rwy 1 helicopter visibility reduction below 1 SM NA. Baro-VNAV NA. Use Jasper altimeter setting; when not received, use Tuscaloosa altimeter setting and increase LPV DA to 680, LNAV/VNAV DA to 1008, and all MDA 20 feet; increase LNAV/VNAV all Cat visibility ¼ SM.	MISSED APPROACH: Climb to 2600 direct TASEE and hold.
-----------	--	--

JFX AWOS-3PT 119.225	COLUMBUS APP CON ★ 126.075 239.25	UNICOM 122.8 (CTAF) 0
--------------------------------	---	---------------------------------



4 NM Holding Pattern		PUGME		2600 TASEE	
6000 ←186°		006°→		*LNAV only.	
2600		006°		2600	
GP 3.00°		JIMGO		POBLE	
TCH 45		2100		2.6 NM to RW01	
		2100		RW01	
		*1200			
		6.8 NM		2.8 NM	
				2.6 NM	
CATEGORY	A	B	C	D	
LPV DA	679-1⅛ 333 (400-1⅛)				
LNAV/ VNAV DA	1007-2¼ 661 (700-2¼)				
LNAV MDA	980-1	634 (700-1)	980-1⅞	634 (700-1⅞)	
CIRCLING	1020-1 663 (700-1)	1060-1 703 (800-1)	1400-3	1043 (1100-3)	

5009 X 80

0.5% Up

1

MIRL Rwy 1-19

SE-4, 07 AUG 2025 to 04 SEP 2025

SE-4, 07 AUG 2025 to 04 SEP 2025