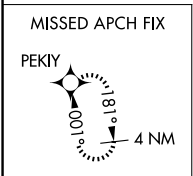
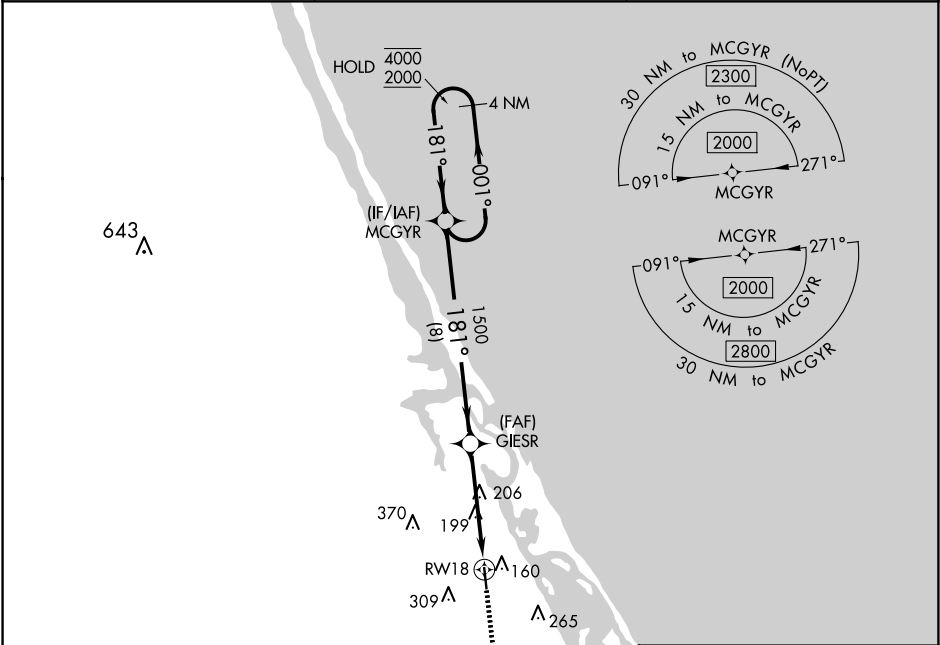


APP CRS	Rwy ldg	4045
181°	TDZE	N/A
	Apt Elev	11

RNAV (GPS)-A
MASSEY RANCH AIRPARK (X50)

RNP APCH.	MISSED APPROACH: Climb to 2000 direct PEKIY and hold.
NA	Procedure NA at night. Use New Smyrna Beach Muni (Jack Bolt Fld) altimeter setting.

EVBS AWOS-3 124.625	DAYTONA APP CON 125.35 322.3	UNICOM 122.7 (CTAF)
------------------------	---------------------------------	------------------------



Visual Segment - Obstacles.				
CATEGORY	A	B	C	D
CIRCLING	500-1 489 (500-1)	620-1 609 (700-1)	680-1¾ 669 (700-1¾)	NA

