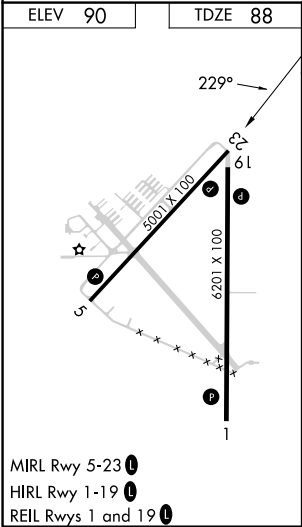
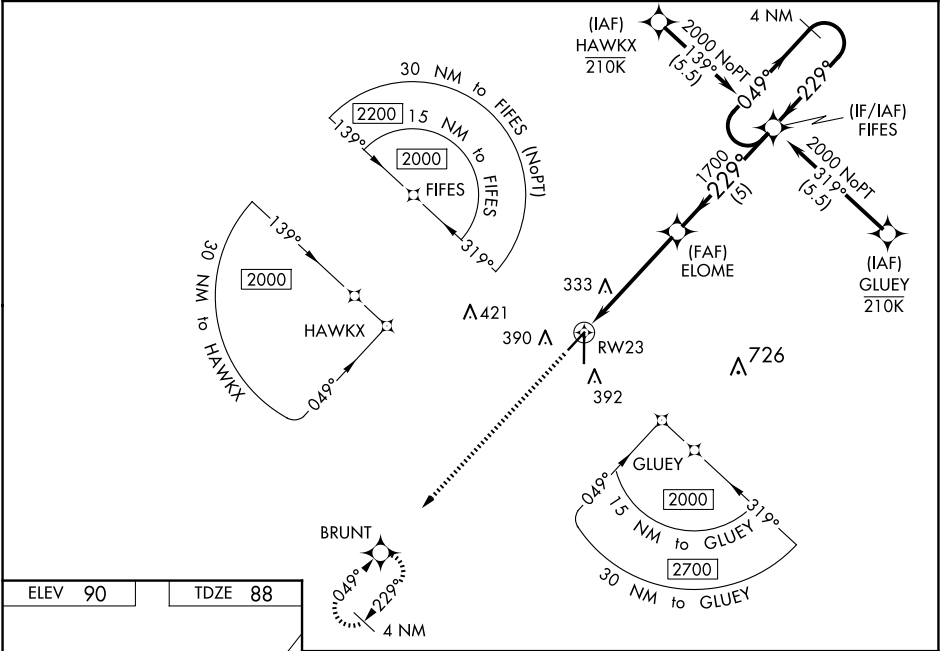


WAAS CH 45538 W23A	APP CRS 229°	Rwy Idg 5001 TDZE 88 Apt Elev 90
--	------------------------	---

RNAV (GPS) RWY 23
ZEPHYRHILLS MUNI (ZPH)

RNP APCH. <div><div></div><div>Baro-VNAV and VDP NA when using Tampa Exec altimeter setting. For uncompensated Baro-VNAV systems, LNAV/VNAV NA below -15°C or above 54°C. Rwy 23 helicopter visibility reduction below ¾ SM NA. When local altimeter setting not received, use Tampa Exec altimeter setting and increase all DA 48 feet and all MDA 60 feet. Increase LPV and LNAV/VNAV all Cats, LNAV and Circling Cat C/D visibility ¼ mile.</div></div>		MISSED APPROACH: Climb to 2000 direct BRUNT and hold.
---	--	---

AWOS-3PT 118.975	TAMPA APP CON 119.9 290.3	UNICOM 123.075 (CTAF)
----------------------------	-------------------------------------	---------------------------------



MIRL Rwy 5-23
HIRL Rwy 1-19
REIL Rws 1 and 19

SE-3, 07 AUG 2025 to 04 SEP 2025

SE-3, 07 AUG 2025 to 04 SEP 2025