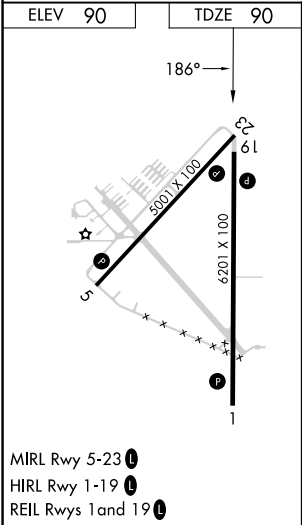
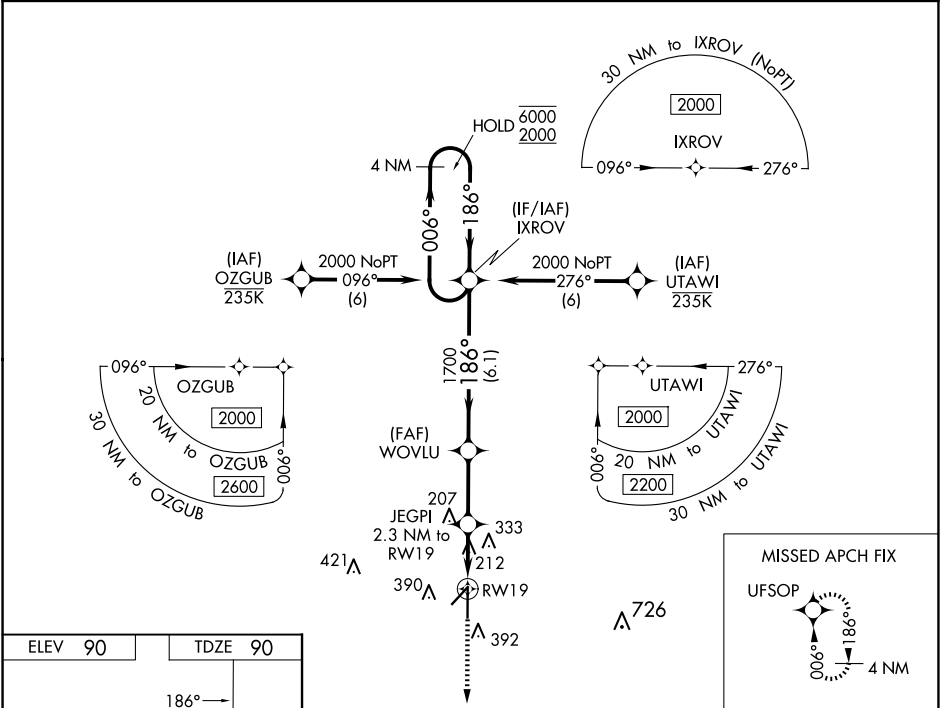


WAAS CH <b>78436</b> <b>W19A</b>	APP CRS <b>186°</b>	Rwy Idg TDZE <b>90</b> Apt Elev <b>90</b>	<b>6201</b>
--	------------------------	---	-------------

RNAV (GPS) RWY 19  
ZEPHYRHILLS MUNI (ZPH)

RNP APCH. ▼ For uncompensated Baro-VNAV systems, LNAV/VNAV NA below -15°C or above 54°C. ▲	MISSED APPROACH: Climb to 2000 direct UFSOP and hold.
--	---

AWOS-3PT <b>118.975</b>	TAMPA APP CON <b>119.9 290.3</b>	UNICOM <b>123.075 (CTAF) 0</b>
----------------------------	-------------------------------------	-----------------------------------



2000 UFSOP		VGSi and RNAV glidepath not coincident (VGSi Angle 3.00/TCH 43).		IXROV 4 NM Holding Pattern	
*LNAV only.		JEGPI 2.3 NM to RW19		WOVLU 1700	
RW19		*1.1 NM to RW19		860*	
1.1 NM		1.2 NM		2.6 NM	
A		B		C	
LPV DA		340-7/8		250 (300-7/8)	
LNAV/VNAV DA		380-1		290 (300-1)	
LNAV MDA		480-1		390 (400-1)	
CIRCLING		740-1		650 (700-1)	
		740-1 3/4		740-2	
		650 (700-1 3/4)		650 (700-2)	