

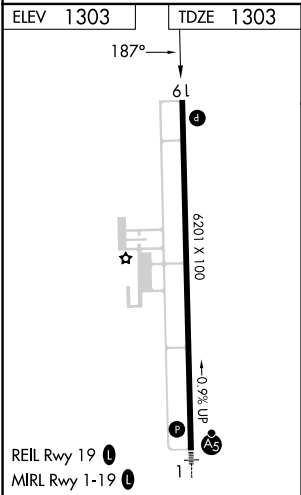
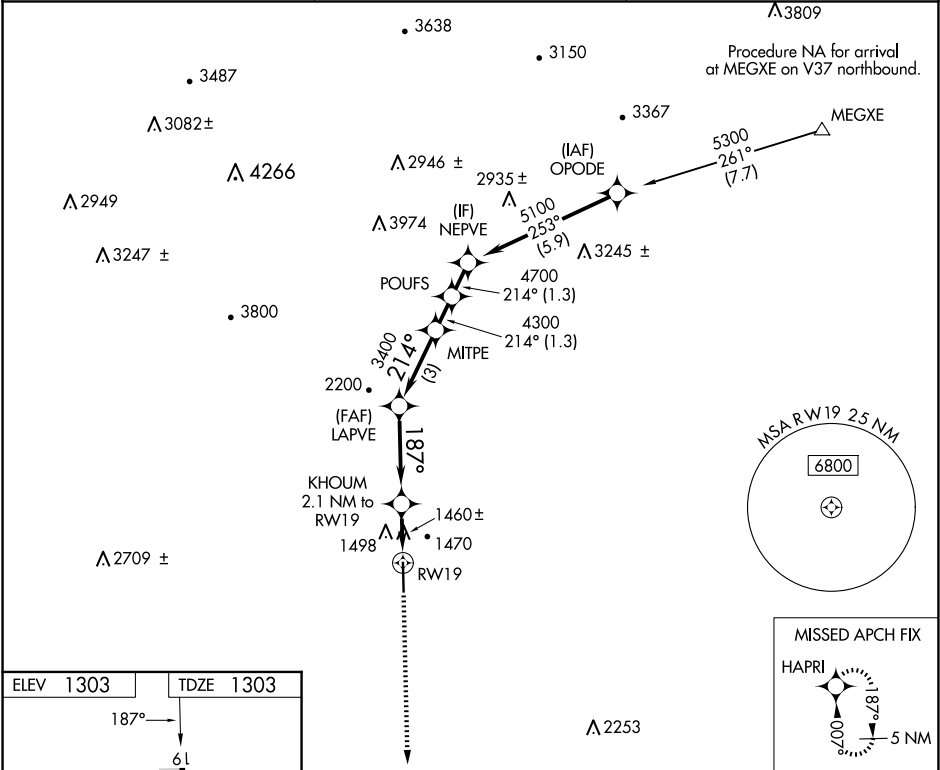
▼

⚠

DME/DME RNP-0.3 NA. VDP NA when using Hickory altimeter setting. When local altimeter setting not received, use Hickory altimeter setting and increase all MDAs 100 feet and LP and LNAV visibility Cats C/D ¼ SM and increase Circling visibility Cat C ½ SM. Rwy 19 helicopter visibility reduction below ¾ SM NA.

MISSED APPROACH: Climb to 5000 direct HAPRI and hold, continue climb-in-hold to 5000.

| | | |
|-------------------|--------------------------------|--------------------------|
| AWOS-3 126.625 | ATLANTA CENTER 125.15 263.0 | UNICOM 122.7 (CTAF) 0 |
|-------------------|--------------------------------|--------------------------|



| | | | | |
|----------|-----------------------|--|-------------------------|------------------------|
| 5000 | HAPRI | VGSI and descent angles not coincident (VGSI Angle 3.00/TCH 47). | | NEPVE |
| | | KHOUM | LAPVE | POUFS |
| | | 2.1 NM to RW19 | MITPE | |
| | | 1.2 NM to RW19 | | |
| | | 187° | 3400 | 214° 5100 |
| | | 2100 | 4300 | 4700 |
| | | 1.2 | 0.9 | 3.5 NM |
| | | | | 3 NM |
| | | | | 1.3 NM |
| | | | | 1.3 NM |
| CATEGORY | A | B | C | D |
| LP MDA | 1720-1 | 417 (500-1) | 1720-1½ | 417 (500-1½) |
| LNAV MDA | 1760-1 | 457 (500-1) | 1760-1¾ | 457 (500-1¾) |
| CIRCLING | 1800-1 497 (500-1) | 1880-1 577 (600-1) | 1880-1½ 577 (600-1½) | 2240-3 937 (1000-3) |