

LOC/DME I-UKF <b>111.55</b> Chan <b>52</b> (Y)	APP CRS <b>007°</b>	Rwy Idg TDZE <b>1276</b> Apt Elev <b>1303</b>
--	------------------------	---

ILS Y or LOC Y RWY 1  
WILKES COUNTY (UKF)

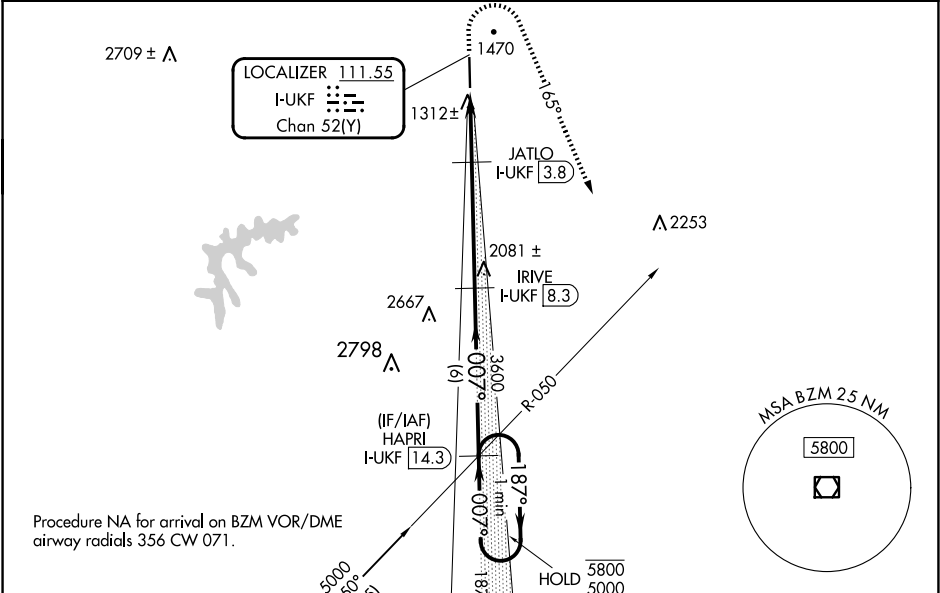
DME required.

⚠ VDP NA when using Hickory altimeter setting. When local altimeter setting not received, use Hickory altimeter setting and increase S-ILS DA to 1569 feet and all MDAs 100 feet, and increase S-LOC Cats C/D visibility ¾ SM and Circling Cat C visibility ½ SM. For inop ALS when using Hickory altimeter setting, increase S-ILS all Cats visibility and S-LOC Cat C/D visibility ¾ SM.

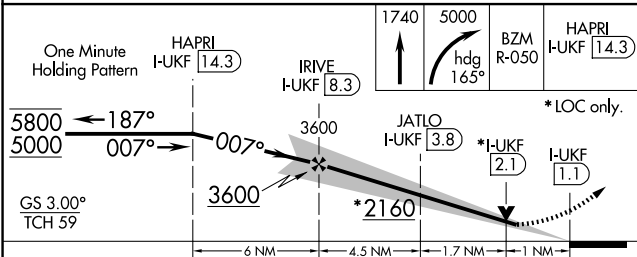
MALSR

MISSED APPROACH: Climb to 1740 then climbing right turn to 5000 heading 165° and BZM VOR/DME R-050 direct HAPRI/I-UKF 14.3 DME and hold, continue climb-in-hold to 5000.

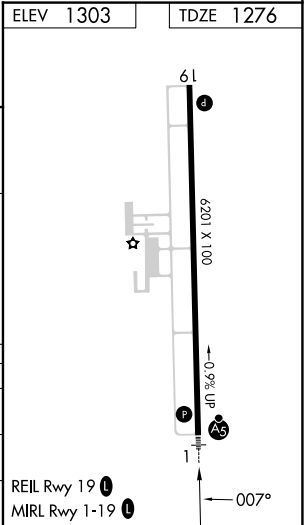
AWOS-3 <b>126.625</b>	ATLANTA CENTER <b>125.15 263.0</b>	UNICOM <b>122.7</b> (CTAF) <b>1</b>
--------------------------	---------------------------------------	--



ELEV 1303	TDZE 1276
-----------	-----------



CATEGORY	A	B	C	D
S-ILS 1	1476-½		200 (200-½)	
S-LOC 1	1640-½	364 (400-½)	1640-⅝	364 (400-⅝)
CIRCLING	1800-1 497 (500-1)	1880-1 577 (600-1)	1880-1½ 577 (600-1½)	2240-3 937 (1000-3)



SE-2, 07 AUG 2025 to 04 SEP 2025

SE-2, 07 AUG 2025 to 04 SEP 2025