

WAAS CH 78115 W18A	APP CRS 185°	Rwy Idg TDZE Apt Elev	5001 454 458
--	------------------------	-----------------------------	---

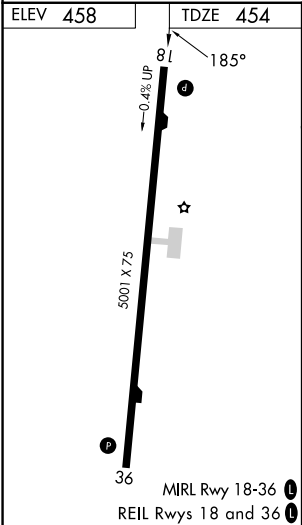
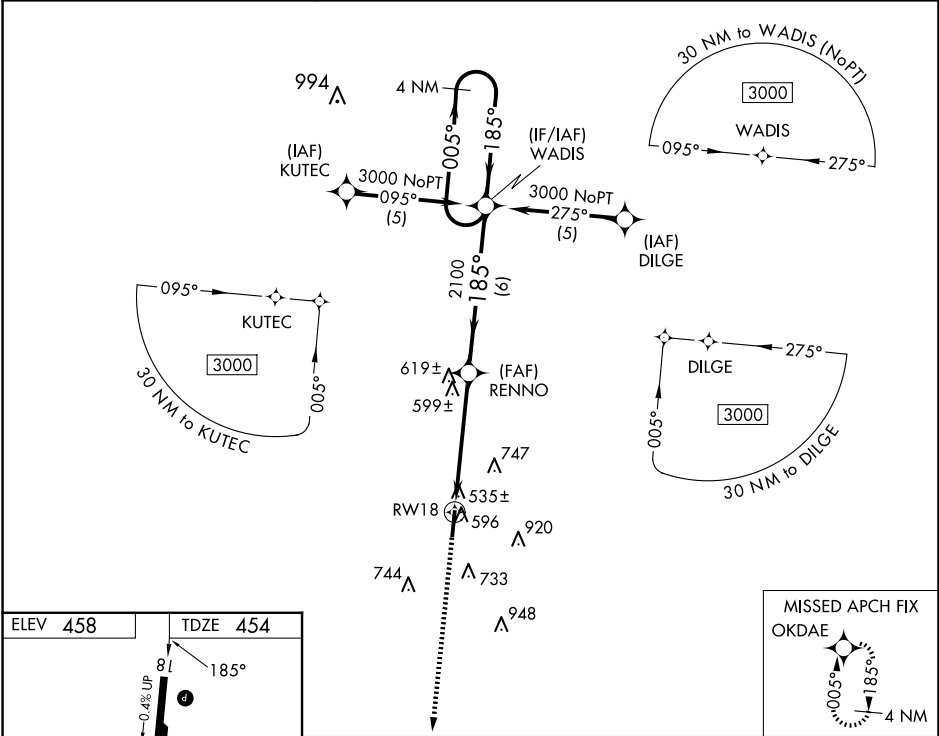
RNAV (GPS) RWY 18
PHILADELPHIA MUNI (MPF)

⚠ For uncompensated Baro-VNAV systems, LNAV/VNAV NA below -15°C (5°F) or above 48°C (118°F). DME/DME RNP-0.3 NA. Visibility reduction by helicopters NA.

⚠ When local altimeter setting not received, use Key Fld altimeter setting and increase all DA 101 feet and all MDA 120 feet and increase LPV all Cats, LNAV Cat C and Circling Cats C and D visibility ¼ mile, increase LNAV/VNAV all Cats, LNAV Cat D visibility ½ mile. Baro-VNAV and VDP NA when using Key Fld altimeter setting.

MISSED APPROACH:
Climb to 3000 direct
OKDAE and hold.

AWOS-3P 118.725	MEMPHIS CENTER 132.75 263.0	UNICOM 123.0 (CTAF) 0
---------------------------	---------------------------------------	---------------------------------



<div>3000 ↑</div> <div>OKDAE ✱</div>		<div>WADIS</div> <div>4 NM Holding Pattern</div>	
<div>*LNAV only.</div> <div>*1.5 NM to RW18</div> <div>RW18</div>		<div>RENNO</div> <div>185°</div> <div>2100</div>	<div>005° →</div> <div>← 185°</div> <div>3000</div> <div>GP 3.00° TCH 47</div>
<div>1.5</div> <div>A</div>		<div>3.5 NM</div> <div>B</div>	<div>6 NM</div> <div>C</div> <div>D</div>
CATEGORY			
LPV DA	774-1¼ 320 (400-1¼)		
LNAV/ VNAV DA	850-1½ 396 (400-1½)		
LNAV MDA	960-1 506 (600-1)		960-1½ 506 (600-1½)
CIRCLING	1060-1 602 (700-1)		1280-2½ 822 (900-2½) 1280-2¾ 822 (900-2¾)

SC-4, 07 AUG 2025 to 04 SEP 2025

SC-4, 07 AUG 2025 to 04 SEP 2025