

WAAS CH 82636 W17A	APP CRS 174°	Rwy Idg 3186 TDZE 1436 Apt Elev 1437
--	------------------------	---

RNAV (GPS) RWY 17

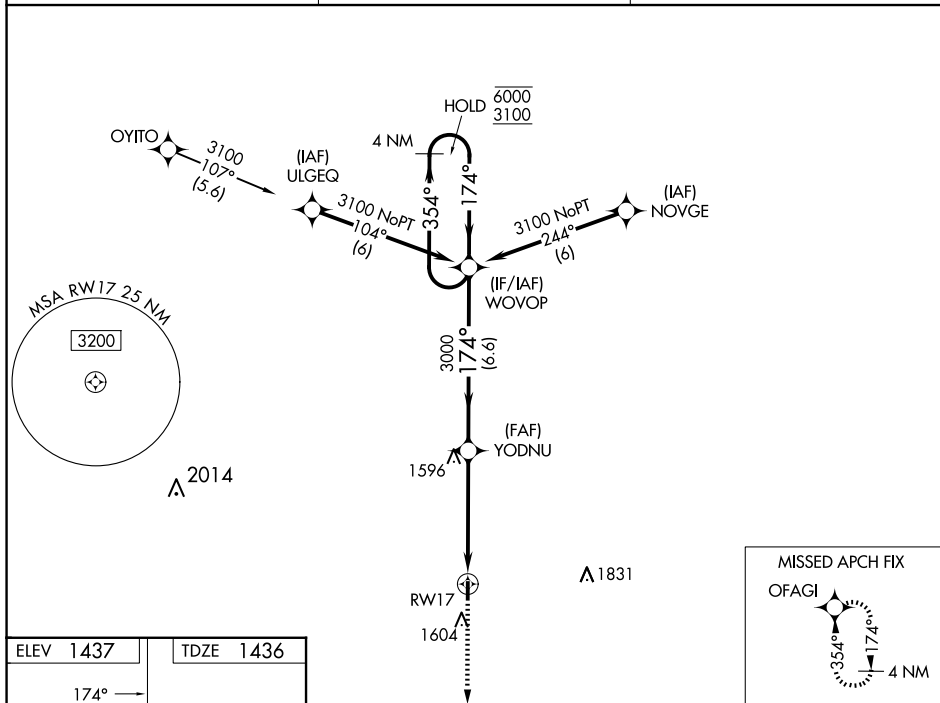
WASHINGTON COUNTY VETERAN'S MEML (K38)

RNP APCH - GPS.

T Rwy 17 helicopter visibility reduction below 1 SM NA.
A NA Baro-VNAV NA. Use Concordia altimeter setting.
 Straight-in and Circling Rwy 17 NA at night.

MISSED APPROACH: Climb to 3000 direct OFAGI and hold.

CNK ASOS 123.825	KANSAS CITY CENTER 127.35 257.975	CTAF 122.90
----------------------------	---	-----------------------



ELEV 1437		TDZE 1436
-----------	--	-----------

MIRL Rwy 17-35 **L**[illegible]