

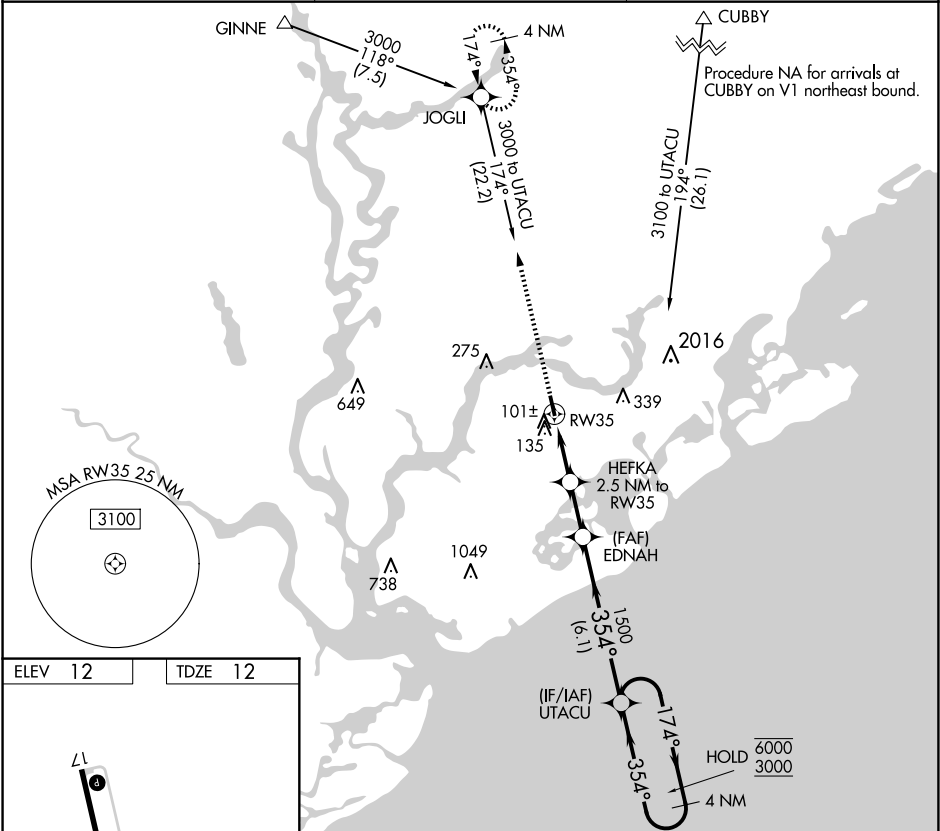
APP CRS	Rwy Ldg	3700
354°	TDZE	12
	Apt Elev	12

RNAV (GPS) RWY 35

MT PLEASANT RGNL-FAISON FLD (L.R.O)

RNP APCH - GPS.	MISSED APPROACH: Climb to 3000 direct JOGLI and hold, continue climb-in-hold to 3000.
-----------------	---

AWOS-3 118.625	CHARLESTON APP CON 121.275 379.925	UNICOM 122.7 (CTAF) 0
-------------------	---------------------------------------	--------------------------



<div> <div> 3000 ↑ </div> <div> </div> </div>		VGSi and descent angles not coincident (VGSi Angle 4.00/TCH 27).		4 NM Holding Pattern	
<div> <div> RW35 </div> <div> 0.9 NM to RW35 </div> </div>		<div> <div> HEFKA 2.5 NM to RW35 </div> <div> </div> </div>		<div> <div> UTACU </div> <div> 174° → 6000 ← 354° 3000 </div> </div>	
<div> <div> </div> <div> 0.9 NM </div> </div>		<div> <div> </div> <div> 1.7 NM </div> </div>		<div> <div> </div> <div> 2 NM </div> </div>	
<div> <div> </div> <div> 6.1 NM </div> </div>					
CATEGORY	A		B		C
LNAV MDA	400-1		388 (400-1)		400-1 388 (400-1 1/8)
CIRCLING	460-1 448 (500-1)		520-1 508 (600-1)		700-2 688 (700-2)

SE-2, 07 AUG 2025 to 04 SEP 2025

SE-2, 07 AUG 2025 to 04 SEP 2025