

WAAS CH <b>62817</b> <b>W17A</b>	APP CRS <b>174°</b>	Rwy Ldg <b>3700</b> TDZE <b>12</b> Apt Elev <b>12</b>
--	------------------------	---

# RNAV (GPS) RWY 17

RNP APCH - GPS.

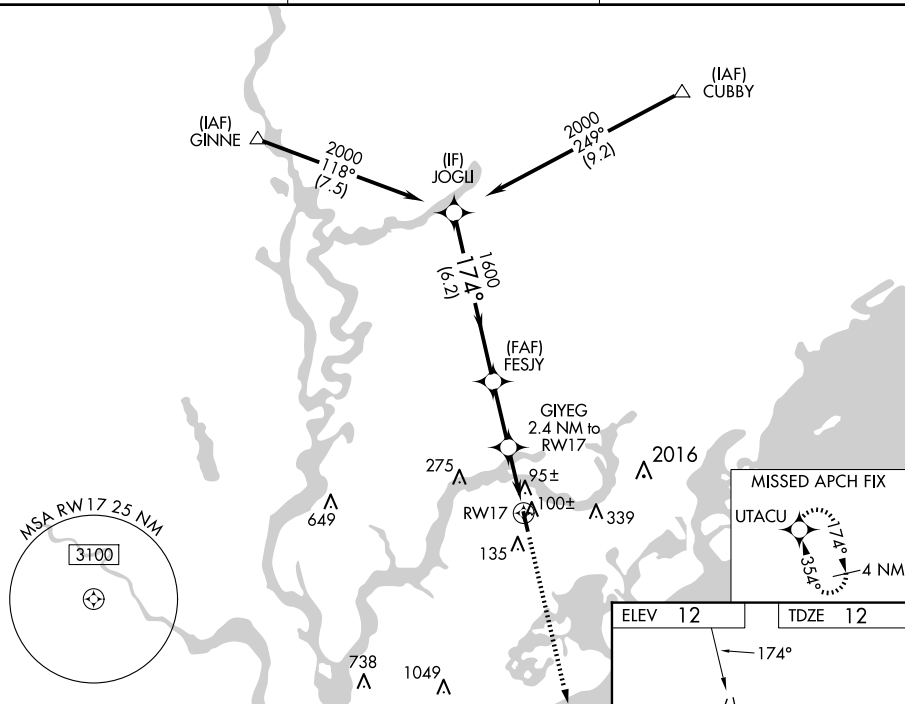


For uncompensated Baro-VNAV systems, LNAV/VNAV NA below -15°C or above 54°C. Rwy 17 helicopter visibility reduction below  $\frac{3}{4}$  SM NA.

**MISSED APPROACH:** Climb to 3000 direct UTACU and hold, continue climb-in-hold to 3000.

AWOS-3  
118.625

CHARLESTON APP CON  
**121.275 379.925**

UNICOM  
122.7 (CTAF) **L**

MISSED APCH FIX

UTACU

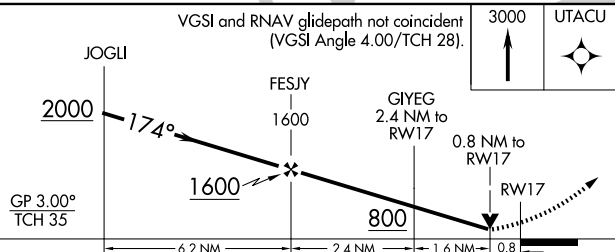
354°

174°

4 NM

ELEV	12		TDZE	12
------	----	--	------	----

VGSI and RNAV glidepath not coincident  
(VGSI Angle 4.00/TCH 28).



CATEGORY		A	B	C	D
LPV	DA	307-1	295 (300-1)		NA
LNAV/ VNAV	DA	389-1½	377 (400-1½)		NA
LNAV	MDA	360-1	348 (400-1)		NA
CIRCLING		460-1 448 (500-1)	520-1 508 (600-1)	700-2 688 (700-2)	NA

MIRL Rwy 17-35 L