

WAAS CH <b>56605</b> <b>W05A</b>	APP CRS <b>047°</b>	Rwy Idg TDZE <b>1219</b> Apt Elev <b>1219</b>
--	------------------------	---

RNAV (GPS) RWY 5

CHEROKEE COUNTY RGNL (CNI)

RNP APCH-GPS.

▼

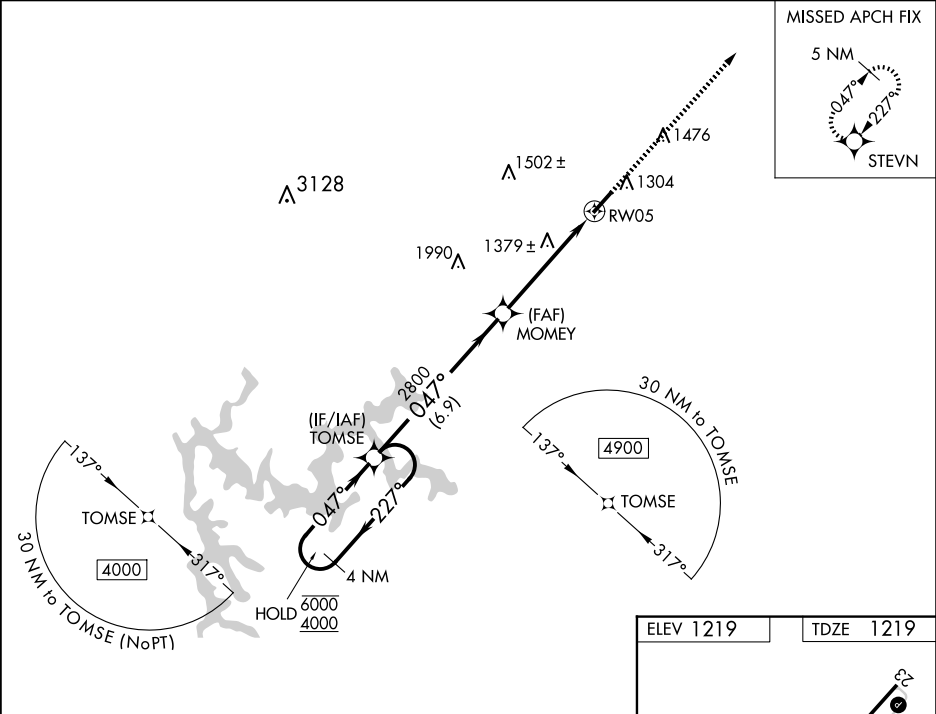
 Circling Rwy 23 NA at night.

▲

 For uncompensated Baro-VNAV systems, LNAV/VNAV NA below -17°C or above 36°C.

MISSED APPROACH: Climb to 5400 direct STEVN and hold, continue climb-in-hold to 5400.

AWOS-3PT <b>119.825</b>	ATLANTA APP CON <b>121.0 268.7</b>	UNICOM <b>123.0 (CTAF) 0</b>
----------------------------	---------------------------------------	---------------------------------



4 NM Holding Pattern TOMSE

VGSI and RNAV glidepath not coincident (VGSI Angle 3.00/TCH 26).

5400 STEVN

GP 3.00° TCH 30

MOMMY 2800

1.3 NM to RWY05

RWY05

6.9 NM 3.6 NM 1.3 NM

CATEGORY	A	B	C	D
LPV DA	1469-7 <sup>7</sup> / <sub>8</sub>		250 (300-7 <sup>7</sup> / <sub>8</sub> )	
LNAV/VNAV DA	1554-1 <sup>1</sup> / <sub>8</sub>		335 (400-1 <sup>1</sup> / <sub>8</sub> )	
LNAV MDA	1640-1	421 (500-1)	1640-1 <sup>1</sup> / <sub>4</sub>	421 (500-1 <sup>1</sup> / <sub>4</sub> )
CIRCLING	1720-1	501 (600-1)	1820-1 <sup>3</sup> / <sub>4</sub> 601 (700-1 <sup>3</sup> / <sub>4</sub> )	2040-2 <sup>3</sup> / <sub>4</sub> 821 (900-2 <sup>3</sup> / <sub>4</sub> )

