

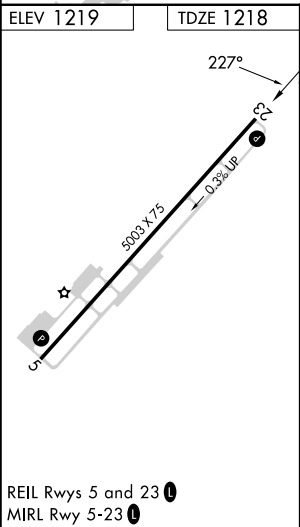
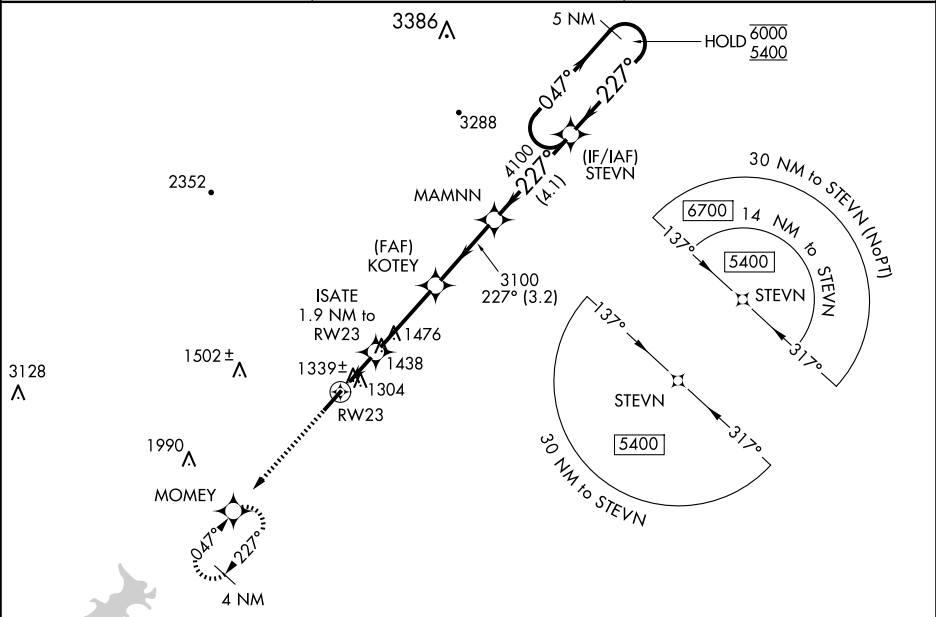
WAAS CH 65923 W23A	APP CRS 227°	Rwy Idg TDZE 1218 Apt Elev 1219	5003
--	------------------------	---	-------------

RNAV (GPS) RWY 23

CHEROKEE COUNTY RGNL (CNI)

RNP APCH-GPS.	MISSED APPROACH: Climb to 4000 direct MOMELY and hold, continue climb-in-hold to 4000.
▼ Rwy 23 helicopter visibility reduction below 1 SM NA. Straight-in Rwy 23 NA at night, Circling Rwy 23 NA at night.	

AWOS-3PT 119.825	ATLANTA APP CON 121.0 268.7	UNICOM 123.0 (CTAF) 0
----------------------------	---------------------------------------	---------------------------------



4000	MOMELY	VGSI and RNAV glidepath not coincident (VGSI Angle 3.00/TCH 33).		5 NM Holding Pattern
ISATE 1.9 NM to RW23	KOTEY	MAMNN	STEVN	047° → 6000 ← 227° 5400
RW23	3100	4100		
1920	3.2 NM	3.2 NM	4.1 NM	
1.9 NM				
CATEGORY	A	B	C	D
LP MDA	1600-1	382 (400-1)	1600-1½ 382 (400-1½)	NA
LNAV MDA	1740-1	522 (600-1)	1740-1½ 522 (600-1½)	NA
CIRCLING	1740-1	521 (600-1)	1820-1¾ 601 (700-1¾)	NA