

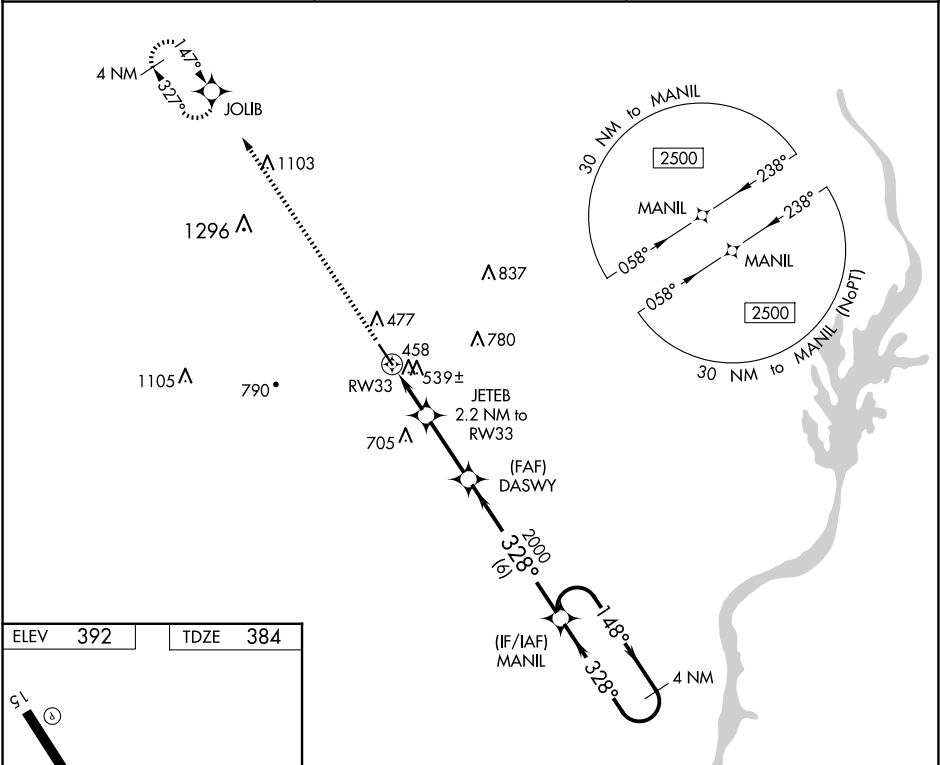
WAAS CH 87134 W33A	APP CRS 328°	Rwy Idg TDZE Apt Elev	5003 384 392
--	------------------------	-----------------------------	---

RNAV (GPS) RWY 33

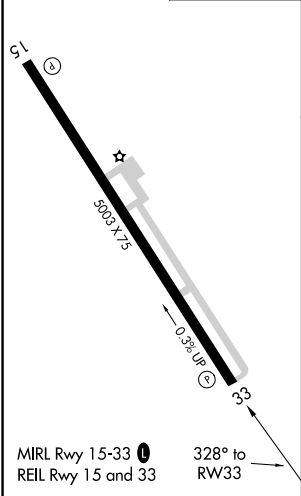
BOONEVILLE/BALDWIN (8M1)

RNP APCH.	Baro-VNAV NA. Use Corinth altimeter setting, when not received, use Tupelo altimeter setting. Rwy 33 helicopter visibility reduction below ¾ SM NA.	MISSED APPROACH: Climb to 2500 direct JOLIB and hold.
-----------	---	---

CRX AWOS-3PT 118.675	MEMPHIS CENTER 135.9 273.55	UNICOM 122.8 (CTAF) 0
--------------------------------	---------------------------------------	---------------------------------



ELEV 392	TDZE 384
----------	----------



2500	JOLIB	VGSI and RNAV glidepath not coincident (VGSI Angle 3.00/TCH 40).	MANIL	4 NM Holding Pattern
*LNAV only.	JETEB 2.2 NM to RWY 33	DASWY 2000	328°	2500
RWY 33	1120*	2000	328°	GP 3.00° TCH 50
2.2 NM	2.8 NM	6 NM		
CATEGORY	A	B	C	D
LPV DA		688-1	304 (300-1)	
LNAV/VNAV DA		783-1 3/8	399 (400-1 3/8)	
LNAV MDA	860-1	476 (500-1)	860-1 3/8	476 (500-1 3/8)