

WAAS CH 49234 W15A	APP CRS 147°	Rwy Idg 5003 TDZE 392 Apt Elev 392
--	------------------------	---

RNAV (GPS) RWY 15

BOONEVILLE/BALDWIN (8M1)

RNP APCH.

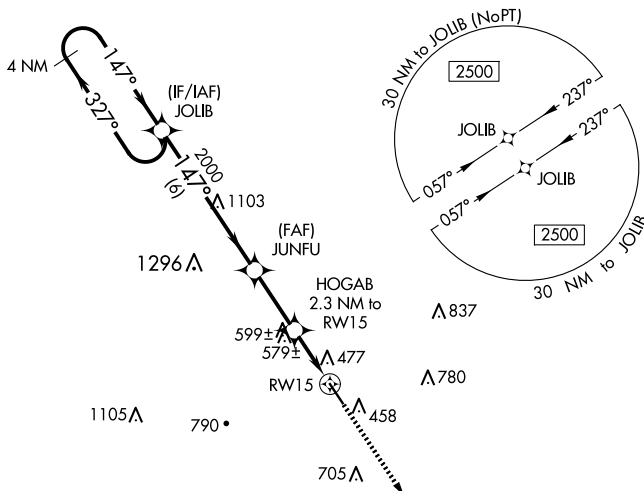
T
A NA Baro-VNAV NA. Use Corinth altimeter setting, when not received use Tupelo altimeter setting and increase all DA 4 feet, and all MDA 20 feet. Rwy 15 helicopter visibility reduction below $\frac{3}{4}$ SM NA.

MISSED APPROACH: Climb to 2500
direct MANILA and hold.

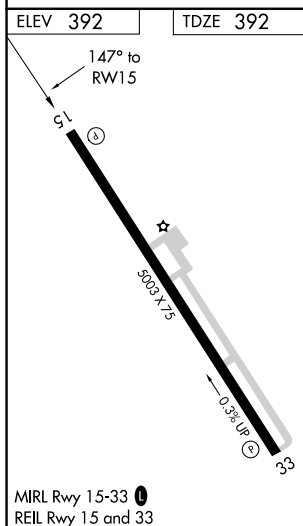
CRX AWOS-3PT
118.675

MEMPHIS CENTER
135.9 273.55

UNICOM
122.8 (CTAF) **L**



MANIL 



MIRL Rwy 15-33 **L**
REIL Rwy 15 and 33

