

WAAS CH 72836 W12A	APP CRS 123°	Rwy Idg 4105 TDZE 1147 Apt Elev 1147
--	------------------------	---

RNAV (GPS) RWY 12
HAROLD DAVIDSON FLD (VMR)

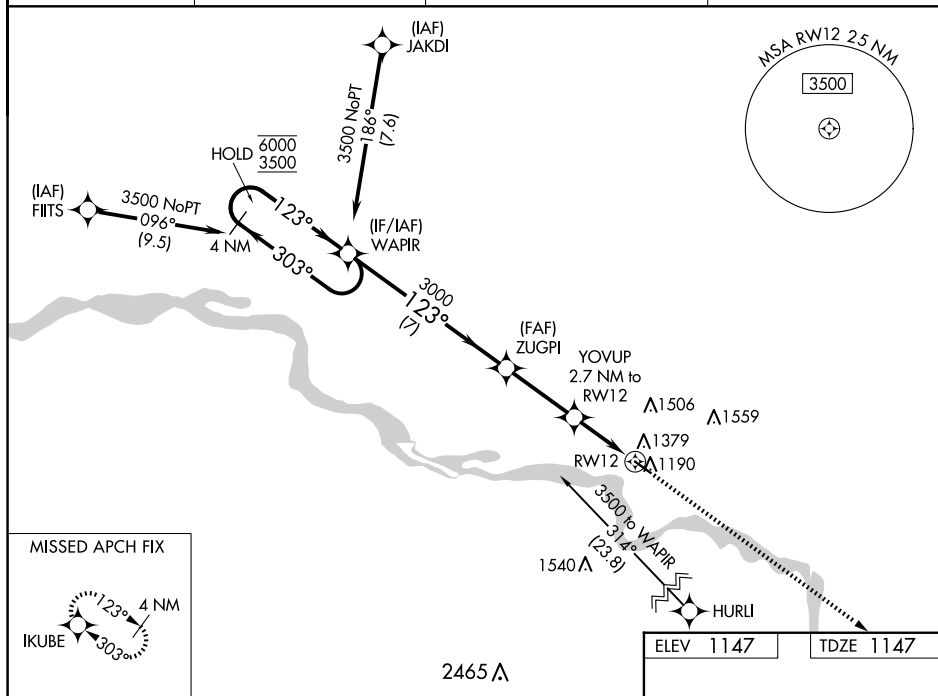
RNP APCH - GPS.



Baro-VNAV NA.
Use Yankton altimeter setting.

MISSED APPROACH: Climb to 3500 direct IKUBE and hold.

AWOS-3P 118.65	YKN AWOS-3PT 119.05	SIoux CITY APP CON★ 124.6 307.0	AUNICOM 122.8 (CTAF) 0
--------------------------	-------------------------------	---	----------------------------------



WAPIR

4 NM
Holding Pattern

6000 ← 303°
3500 → 123°

GP 3.00°
TCH 38

ZUGPI 3000

YOVUP 2.7 NM to RWY 12

RWY 12

Distances: 7 NM, 3 NM, 2.7 NM

CATEGORY	A	B	C	D
LPV DA	1470-1 323 (400-1)			NA
LNAV/ VNAV DA	1659-1½ 512 (600-1½)			NA
LNAV MDA	1700-1	553 (600-1)	1700-1⅝ 553 (600-1⅝)	NA
C CIRCLING	1760-1	613 (700-1)	1900-2¼ 753 (800-2¼)	NA

VERMILLION, SOUTH DAKOTA

Orig-B 20APR23

42°46'N-96°56'W

HAROLD DAVIDSON FLD (VMR)

RNAV (GPS) RWY 12

NC-1, 07 AUG 2025 to 04 SEP 2025