

WAAS CH 69331 W12A	APP CRS 124°	Rwy Idg 3601 TDZE 1748 Apt Elev 1748
--	------------------------	---

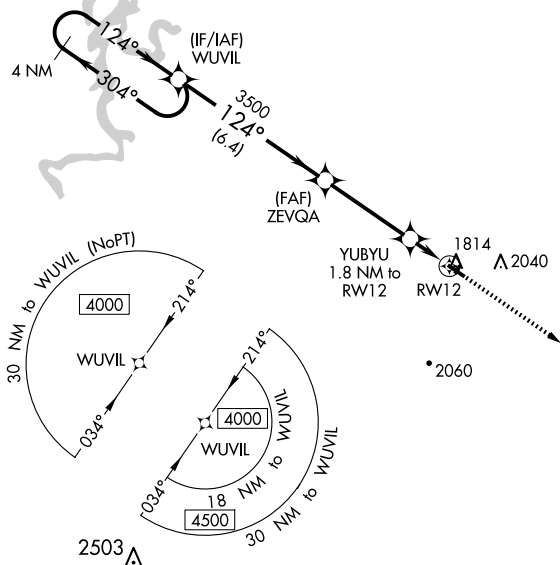
RNAV (GPS) RWY 12
HUNTSVILLE MUNI (H34)

RNP APCH - GPS.

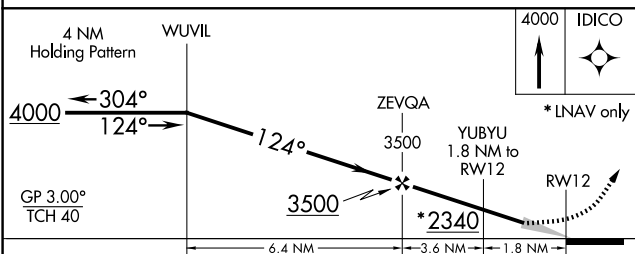
NA Baro-VNAV NA. Use Springdale altimeter setting; when not received, use Drake Fld altimeter setting and increase all DA 18 feet and all MDA 20 feet; increase LPV all Cats, LNAV/VNAV all Cats and LNAV Cat C visibilities $\frac{1}{8}$ mile. Circling NA to Rwy 3 and 21.


MISSED APPROACH:
Climb to 4000 direct
IDICO and hold.

ASG AWOS-3 124.675	RAZORBACK APP CON ★ 126.6 305.2	UNICOM 122.8 (CTAF) 0
------------------------------	---	--



ELEV 1748		TDZE 1748
-----------	--	-----------



CATEGORY	A	B	C	D
LPV DA	2097-1½ 349 (400-1½)			NA
INAV/ VNAV DA	2097-1½ 349 (400-1½)			NA
INAV MDA	2180-1 432 (500-1)		2180-1¼ 432 (500-1¼)	NA
 CIRCLING	2280-1 532 (600-1)	2520-1 772 (800-1)	2520-2¼ 772 (800-2¼)	NA

