

WAAS CH <b>73031</b> <b>W17A</b>	APP CRS <b>166°</b>	Rwy Idg TDZE Apt Elev	<b>6102</b> <b>4297</b> <b>4322</b>
--	------------------------	-----------------------------	---

RNAV (GPS) RWY 17

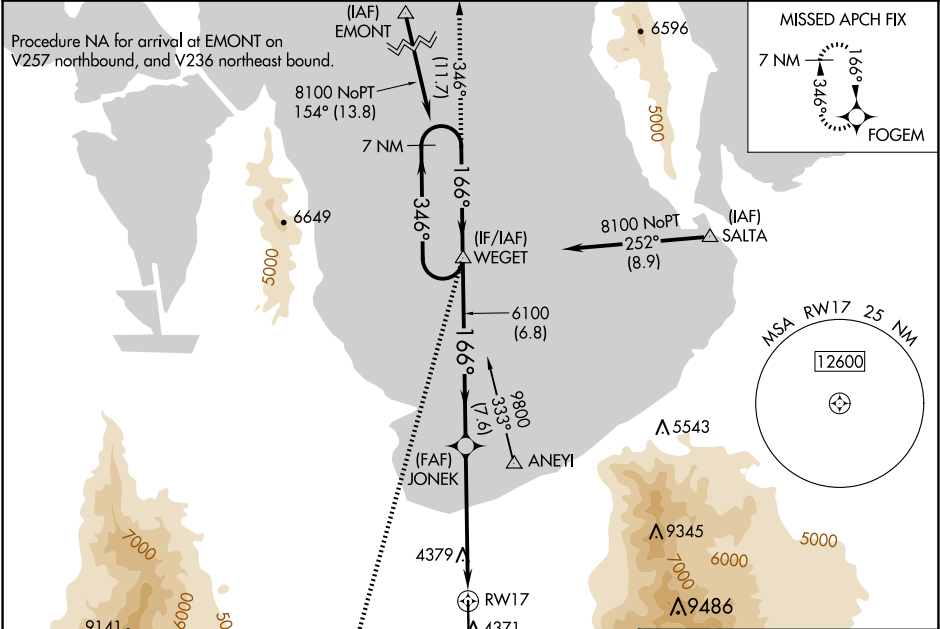
BOULINDER FLD/TOOELE VALLEY (TVY)

For uncompensated Baro-VNAV systems, LNAV/VNAV NA below -23°C (-9°F) or above 49°C (120°F). DME/DME RNP-0.3 NA. For inop ALS, increase LNAV/VNAV all Cats visibility to ¾ SM, increase LNAV Cat C/D visibility to 1 SM.

MALSR

MISSED APPROACH: Climb to 4800 then climbing right turn to 8600 direct WEGET and track 346° to FOGEM and hold.

AWOS-3 <b>119.725</b>	SALT LAKE CITY APP CON <b>135.5 316.15</b>	CLNC DEL <b>124.4</b>	UNICOM <b>123.0 (CTAF)</b>
--------------------------	---	--------------------------	-------------------------------



ELEV 4322		D TDZE 4297	
7 NM Holding Pattern		* LNAV only	
8100 ← 346° 166° →		* 1 NM to RWY 17	
GP 3.00° TCH 55		RWY 17	
6.8 NM		4.6 NM	
A		B	
LPV DA		4497-½ 200 (200-½)	
LNAV/VNAV DA		4547-½ 250 (300-½)	
LNAV MDA		4640-½ 343 (400-½)	
CIRCLING		4820-1 498 (500-1) 4900-1 578 (600-1) 5060-2 738 (800-2) 5380-3 1058 (1100-3)	

REIL Rwy 35

MRL Rwy 17-35