

APP CRS
069°

Rwy Idg
TDZE
678

Apt Elev
689

RNAV (GPS) RWY 7

GREENE COUNTY RGNL (C'PP)

RNP APCH - GPS.

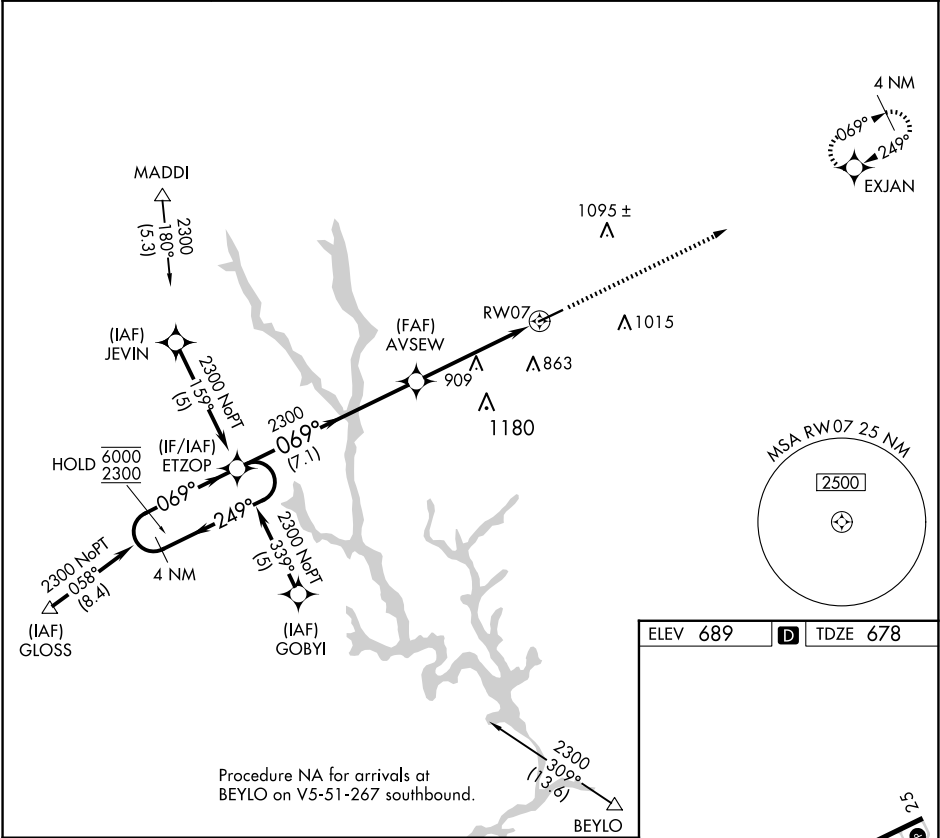
▽

▲

Rwy 7 helicopter visibility reduction below ¾ SM NA.

MISSED APPROACH: Climb to 2300 direct EXJAN and hold.

AWOS-3 124.525	ATLANTA APP CON ★ 132.475 291.1	GCO 121.725	UNICOM 122.8 (CTAF) 0
--------------------------	---	-----------------------	---------------------------------



4 NM Holding Pattern

ETZOP

AVSEW

6000 ← 249°

2300 → 069°

069° → 2300

1.4 NM to RW07

3.04° TCH 34

7.1 NM

3.5 NM

1.4 NM

2300 EXJAN

5500 X 100

069°

CATEGORY	A	B	C	D
LNAV MDA	1160-1	482 (500-1)	1160-1⅓	482 (500-1⅓)

HIRL Rwy 7-25 0