

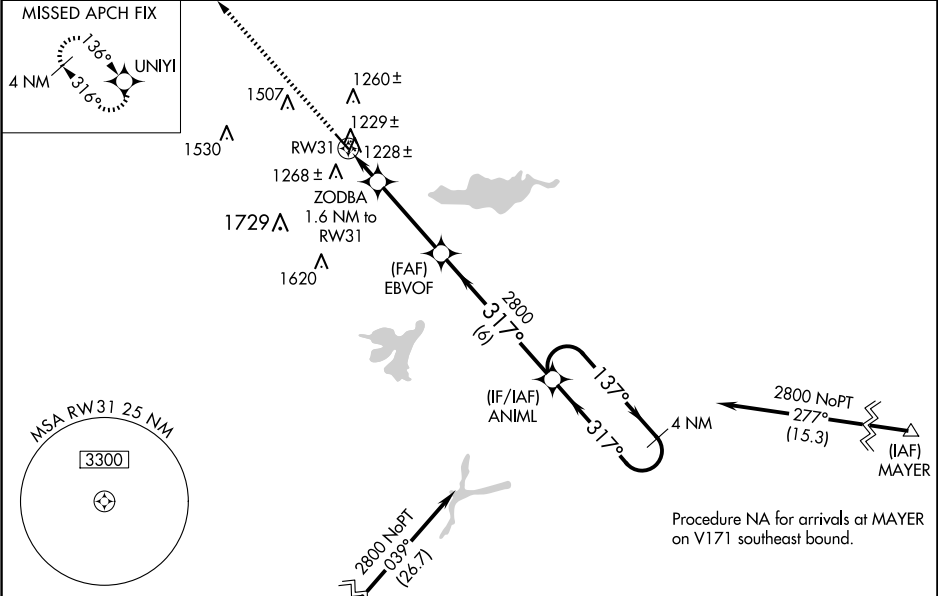
WAAS CH <b>40319</b> <b>W31A</b>	APP CRS <b>317°</b>	Rwy Idg TDZE <b>1140</b> Apt Elev <b>1140</b>	<b>4002</b>
--	------------------------	---	-------------

RNAV (GPS) RWY 31

LITCHFIELD MUNI (LJF)

RNP APCH - GPS. ▼ Baro-VNAV NA when using Hutchinson altimeter setting. For uncompensated Baro-VNAV systems, LNAV/VNAV NA below -17°C or above 54°C. When Local altimeter setting not received, use Hutchinson altimeter setting: increase LPV DA to 1435 feet; increase LNAV/VNAV DA to 1594 feet; increase all MDA 60 feet and LNAV and Circling Cat C visibility ¼ SM. VDP NA with Hutchinson altimeter setting. ▲	MISSED APPROACH: Climb to 2900 direct UNYI and hold.
---	---

AWOS-3 <b>119.65</b>	MINNEAPOLIS CENTER <b>125.5 323.1</b>	CTAF <b>122.9 0</b>
-------------------------	--	------------------------



ELEV 1140	TDZE 1140
-----------	-----------

