

(ILEXY4.ILEXY) 23166
ILEXY FOUR DEPARTURE (RNAV)

AL-6938 (FAA)

TAYLOR MUNI (T74)
TAYLOR, TEXAS

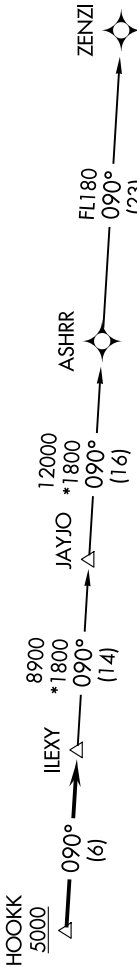
UNICOM (CTAF)
122.8
AUSTIN DEPT CON
127.225 317.65

TOP ALTITUDE:
ASSIGNED BY ATC

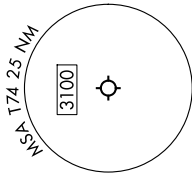
RNAV 1 - DME/DME/IRU or GPS.
RADAR required.

TAKEOFF MINIMUMS:
Rwys 17, 35: Standard.

← 354° — 174° →



NOTE: Houston terminal area arrivals expect routing from ILEXY.
NOTE: JAYJO transition to join V306 only.
NOTE: Aircraft not destined the Houston terminal area or joining V306 must file the ZENZI transition.



NOTE: Chart not to scale.

DEPARTURE ROUTE DESCRIPTION

TAKEOFF RUNWAY 17: Climb on heading 174° or as assigned by ATC for vectors to cross HOOKK at or above 5000, thence. . . .
TAKEOFF RUNWAY 35: Climb on heading 354° or as assigned by ATC for vectors to cross HOOKK at or above 5000, thence. . . .
. . . . on track 090° to ILEXY, then on transition. Maintain altitude assigned by ATC. Expect filed altitude 10 minutes after departure.

JAYJO TRANSITION (ILEXY4.JAYJO)
ZENZI TRANSITION (ILEXY4.ZENZI)