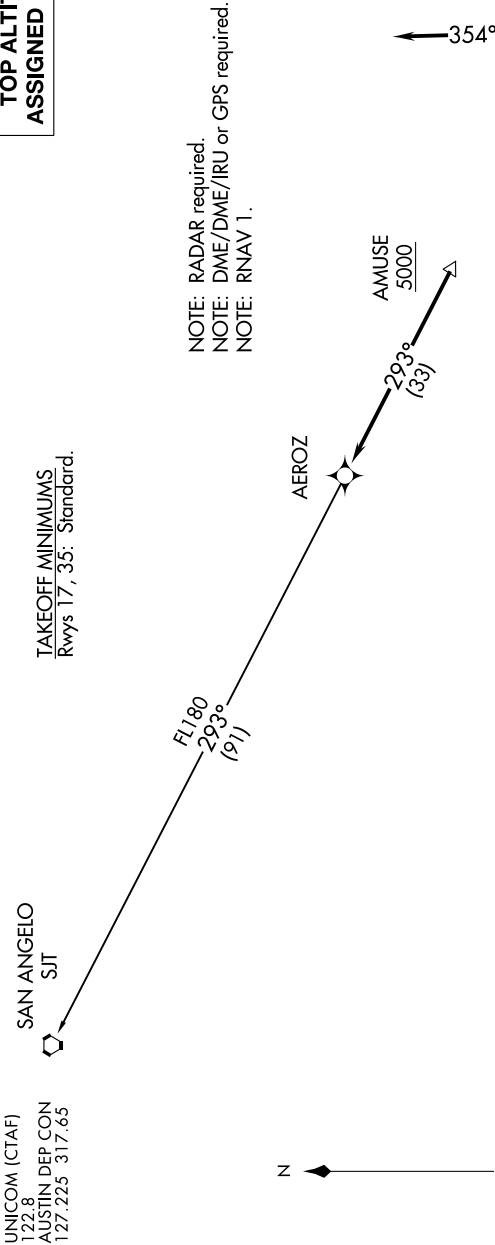


SC-3, 07 AUG 2025 to 04 SEP 2025

TOP ALTITUDE:  
ASSIGNED BY ATC



NOTE: RADAR required.  
NOTE: DME/DME/IRU or GPS required.  
NOTE: RNAV 1.

DEPARTURE ROUTE DESCRIPTION

TAKEOFF RUNWAY 17: Climb on heading 174° or as assigned by ATC for vectors to cross AMUSE at or above 5000, thence....  
TAKEOFF RUNWAY 35: Climb on heading 354° or as assigned by ATC for vectors to cross AMUSE at or above 5000, thence....  
... on track 293° to AEROZ, then on SAN ANGELO TRANSITION. Maintain altitude assigned by ATC. Expect filed altitude 10 minutes after departure.

SAN ANGELO TRANSITION (AEROZ2.SJT)

NOTE: Chart not to scale.

SC-3, 07 AUG 2025 to 04 SEP 2025