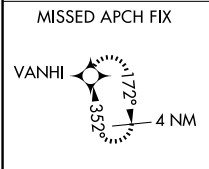
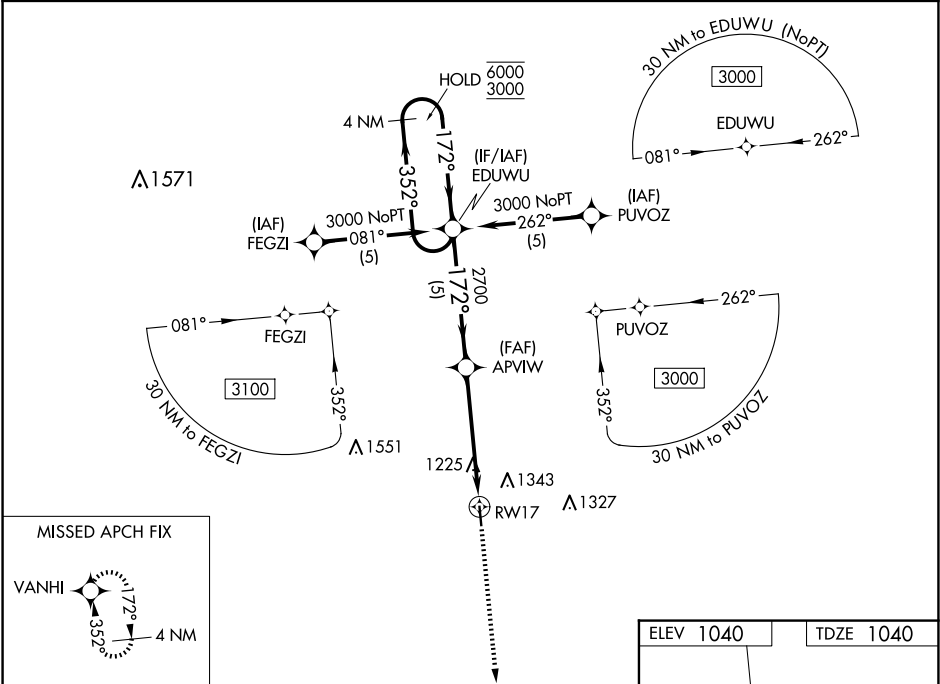


WAAS CH 82017 W17A	APP CRS 172°	Rwy Idg TDZE 1040 Apt Elev 1040
--	------------------------	---

RNAV (GPS) RWY 17

CAMERON MEML (EZZZ)

RNP APCH.		MISSED APPROACH: Climb to 3000 direct VANHI and hold.	
▼ Rwy 17 helicopter visibility reduction below ¾ SM NA. For uncompensated Baro-VNAV systems, LNAV/VNAV NA below -17°C or above 54°C.			
AWOS-3 121.05	KANSAS CITY APP CON 118.4 307.35	CLNC DEL 121.6	UNICOM 122.8 (CTAF) 1



4 NM Holding Pattern		VGSI and RNAV glidepath not coincident (VGSI Angle 3.00/TCH 21).		3000	VANHI
EDUWU		APIVW		2700	*LNAV only
6000 3000		2700		*1.3 NM to RWY 17	
GP 3.00° TCH 40		RWY 17			
5 NM		3.7 NM		1.3 NM	
CATEGORY	A	B	C	D	
LPV DA	1290-¾	250 (300-¾)		NA	
LNAV/VNAV DA	1518-1¾	478 (500-1¾)		NA	
LNAV MDA	1480-1	440 (500-1)		NA	
CIRCLING	1660-1	620 (700-1)		NA	

