

WAAS CH 99610 W33A	APP CRS 326°	Rwy Idg TDZE Apt Elev	5001 10 10
--	------------------------	-----------------------------	---------------------------------------

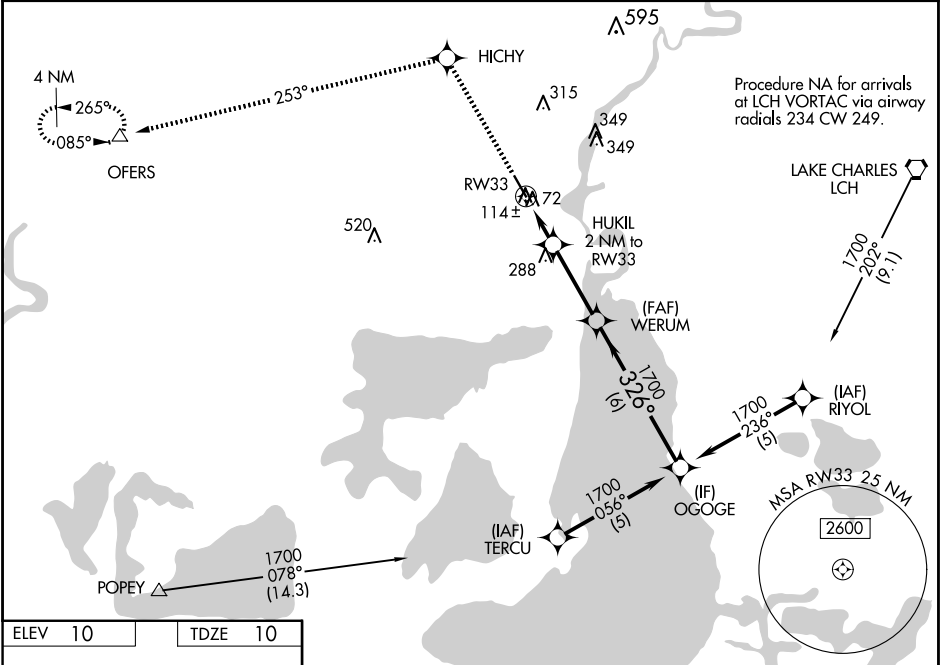
RNAV (GPS) RWY 33
SOUTHLAND FLD (UXL)

RNP APCH-GPS.

Baro-VNAV NA when using Lake Charles Rgnl altimeter setting. For uncompensated Baro-VNAV systems, LNAV/VNAV NA below -15°C or above 49°C. Rwy 33 helicopter visibility reduction below ¾ SM NA. When local altimeter setting not received, use Lake Charles Rgnl altimeter setting and increase LPV DA to 367 feet; increase LNAV/VNAV DA to 403 feet and all visibilities ½ SM; increase all MDAs 20 feet and Circling visibility Cat C/D ¼ SM.

MISSED APPROACH: Climb to 2500 direct HICHY and via 253° track to OFERS and hold.

AWOS-3PT 118.175	LAKE CHARLES APP CON ★ 119.35 282.3	UNICOM 122.8 (CTAF) 0
----------------------------	---	---------------------------------



ELEV 10		TDZE 10	
2500 HICHY		tr 253° OFERS	
*LNAV only		VGSI and RNAV glidepath not coincident (VGSI Angle 3.00/TCH 50).	
HUKIL 2 NM to RW33		WERUM	
RW33		OGOG	
326°		326°	
*680		1700	
2 NM		3.1 NM	
6 NM		Procedure Turn NA	
CATEGORY		A	
LPV DA		348-1¼	
LNAV/VNAV DA		384-1¼	
LNAV MDA		380-1	
CIRCLING		420-1	
410 (500-1)		520-1	
510 (600-1)		680-1¾	
670 (700-1¾)		680-2	
670 (700-2)		380-1¼	
370 (400-1¼)		GP 3.00°	
TCH 40			