

WAAS CH 86711 W15A	APP CRS 146°	Rwy Idg TDZE Apt Elev	5001 10 10
----------------------------------------	------------------------	-----------------------------	---------------------------------------

RNAV (GPS) RWY 15

SOUTHLAND FLD (UXL)

RNP APCH-GPS

▼

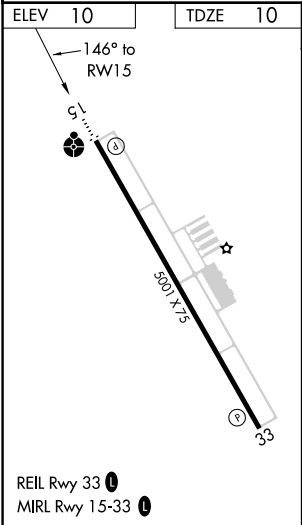
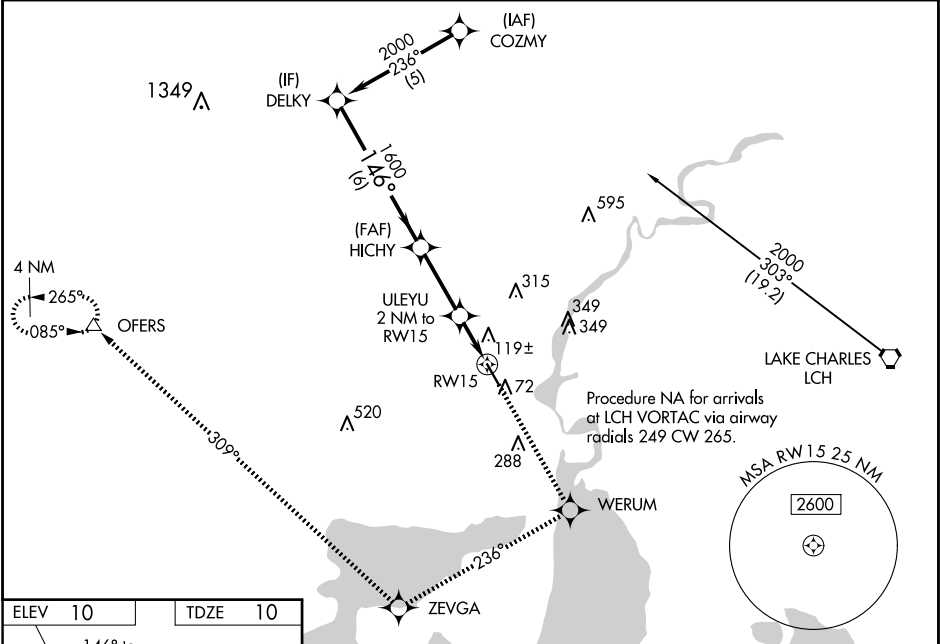
⚠

Inoperative table does not apply to LNAV/VNAV. Baro-VNAV NA when using Lake Charles Rgnl altimeter setting. For uncompensated Baro-VNAV systems, LNAV/VNAV NA below -15°C or above 48°C. Rwy 15 helicopter visibility reduction below ¾ SM NA. When local altimeter setting not received, use Lake Charles Rgnl altimeter setting and increase LPV DA to 328 feet and all visibilities ¼ SM; increase LNAV/VNAV DA to 438 feet; increase all MDAs 20 feet and Circling visibility Cat C/D ¼ SM. VDP NA when using Lake Charles Rgnl altimeter setting.

ODALS

MISSED APPROACH: Climb to 2500 direct WERUM and via 236° track to ZEVEGA and via 309° track to OFERS and hold.

AWOS-3PT 118.175	LAKE CHARLES APP CON ★ 119.35 282.3	UNICOM 122.8 (CTAF) 0
----------------------------	-----------------------------------------------	---------------------------------



Procedure Turn NA		2500 ↑		WERUM ✱		tr 236° ✱		ZEVEGA ✱		tr 309° ✱		OFERS △	
DELKY												*LNNAV only	
2000													
GP 3.00° TCH 40													
VGSI and RNAV glidepath not coincident (VGSI Angle 3.00/TCH 50).													
146°													
1600													
HICHY													
ULEYU 2 NM to RW15													
*1.1 NM to RW15													
*680													
RW15													
6 NM		2.8 NM		0.9		1.1							
CATEGORY	A	B	C	D									
LPV DA	309-1		299 (300-1)										
LNAV/ VNAV DA	419-1½		409 (500-1 ½)										
LNAV MDA	380-¾		370 (400-¾)		380-1¼ 370 (400-1¼)								
CIRCLING	420-1 410 (500-1)	520-1 510 (600-1)	680-1¾ 670 (700-1 ¾)	680-2 670 (700-2)									