

APP CRS	Rwy Idg	4006
272°	TDZE	-135
	Apt Elev	-129

RNAV (GPS) RWY 26

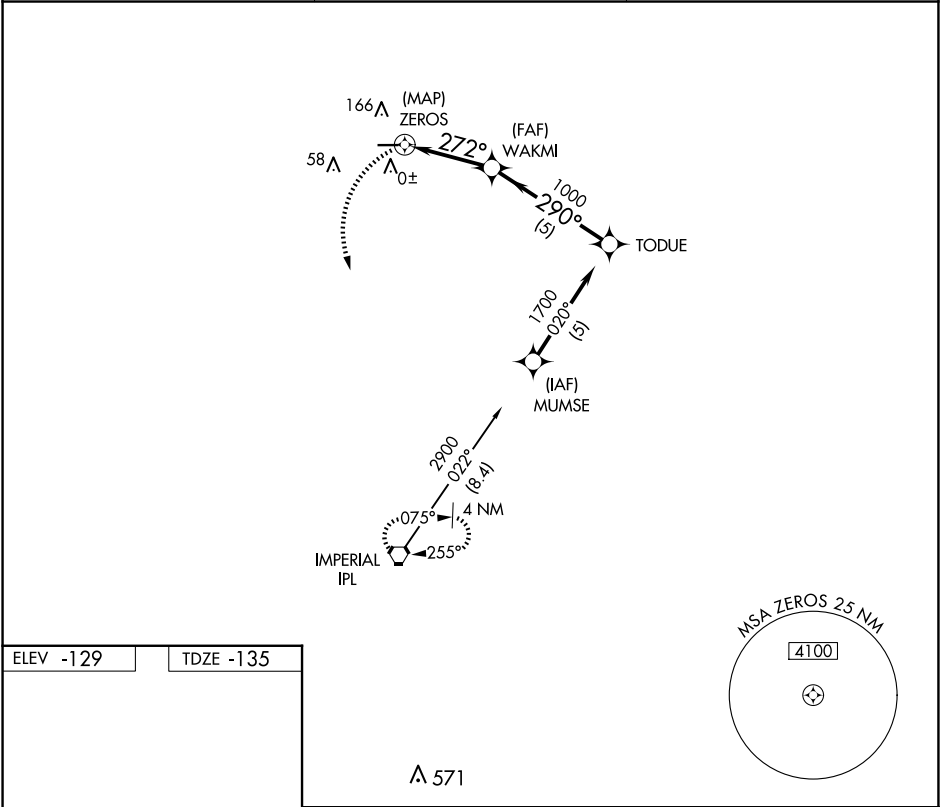
BRAWLEY MUNI (BWC)

NA

GPS or RNP-0.3 required. DME/DME RNP-0.3 NA. Use Imperial County altimeter setting. Circling Rwy 8 NA at night.

MISSED APPROACH: Climbing left turn to 3600 direct IPL VORTAC and hold.

IPL ASOS 132.175	YUMA CERAP 128.55 292.2	CTAF 122.9
---------------------	----------------------------	---------------



ELEV -129

TDZE -135

REIL Rws 8 and 26

MIRL Rwy 8-26

<p>3600 IPL</p> <p>ZEROS</p> <p>WAKMI</p> <p>TODUE</p> <p>272°</p> <p>2.95° TCH 40</p> <p>290°</p> <p>1000</p> <p>1700</p> <p>Procedure Turn NA</p> <p>0.3 3.2 NM 5 NM</p>					
CATEGORY	A		B	C	D
LNAV MDA	360-1 495 (500-1)		360-1¼ 495 (500-1¼)		NA
CIRCLING	560-1 689 (700-1)		560-2 689 (700-2)		NA

SW-3, 07 AUG 2025 to 04 SEP 2025

SW-3, 07 AUG 2025 to 04 SEP 2025