

WAAS CH <b>97634</b> <b>W19A</b>	APP CRS <b>194°</b>	Rwy Ldg <b>5507</b> TDZE <b>497</b> Apt Elev <b>497</b>
--	------------------------	---

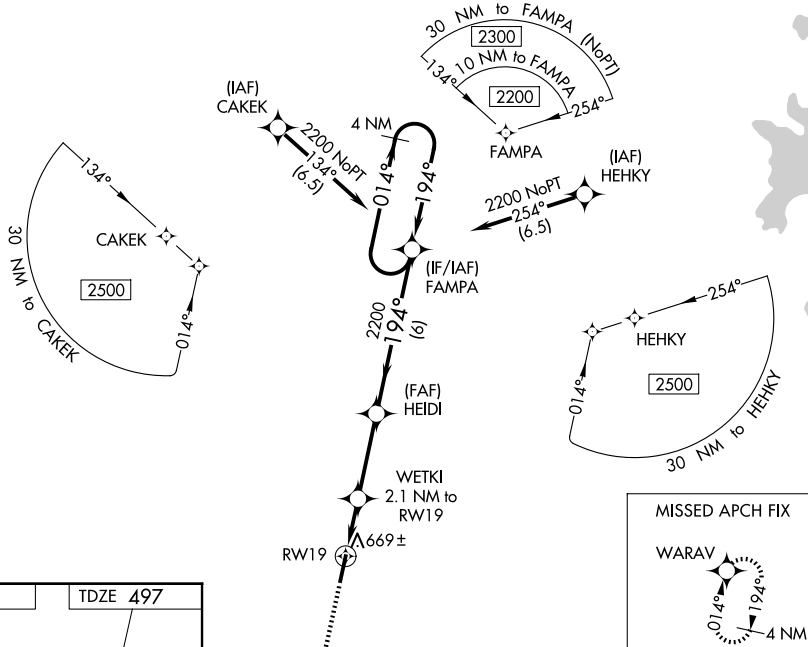
# RNAV (GPS) RWY 19

## SGT LEE RUSSELL CARROLL COUNTY (HZD)

**V** For uncompensated Baro-VNAV systems, LNAV/VNAV NA below -15°C (5°F) or above **A** 54°C (130°F). DME/DME RNP-0.3 NA. When local altimeter setting not received, use Jackson Rgnl altimeter setting and increase all DA 94 feet and all MDA 100 feet; increase LPV all Cats and LNAV/VNAV all Cats visibility  $\frac{3}{8}$  mile, LNAV Cats C and D visibility  $\frac{1}{4}$  mile, and Circling Cats C and D visibility  $\frac{1}{2}$  mile. VDP and Baro-VNAV NA with Jackson Rgnl altimeter setting. Helicopter visibility reduction below  $\frac{3}{4}$  SM NA.

**MISSED APPROACH:**  
Climb to 2200 direct  
WARAV and hold.

AWOS-3 <b>133.275</b>	MEMPHIS CENTER <b>134.65 316.15</b>	UNICOM <b>122.8 (CTAF) 0</b>
--------------------------	--	---------------------------------



VGSIs and RNAV glidepath not coincident (VGSIs Angle 4.00°/TCH 28).

4 NM Holding Pattern

2200

WARAV

\* LNAV only.

WETKI 2.1 NM to RW19

HEIDI 2200

FAMPA

2200

014°

194°

194°

2200

GP 3.00° TCH 40

0.9 NM

1.2 NM

3.1 NM

6 NM

RW19

\* 0.9 NM to RW19

\* 1.200