

WAAS CH <b>50340</b> <b>W31A</b>	APP CRS <b>309°</b>	Rwy Ldg <b>3700</b> TDZE <b>79</b> Apt Elev <b>80</b>
--	------------------------	---

RNAV (GPS) RWY 31

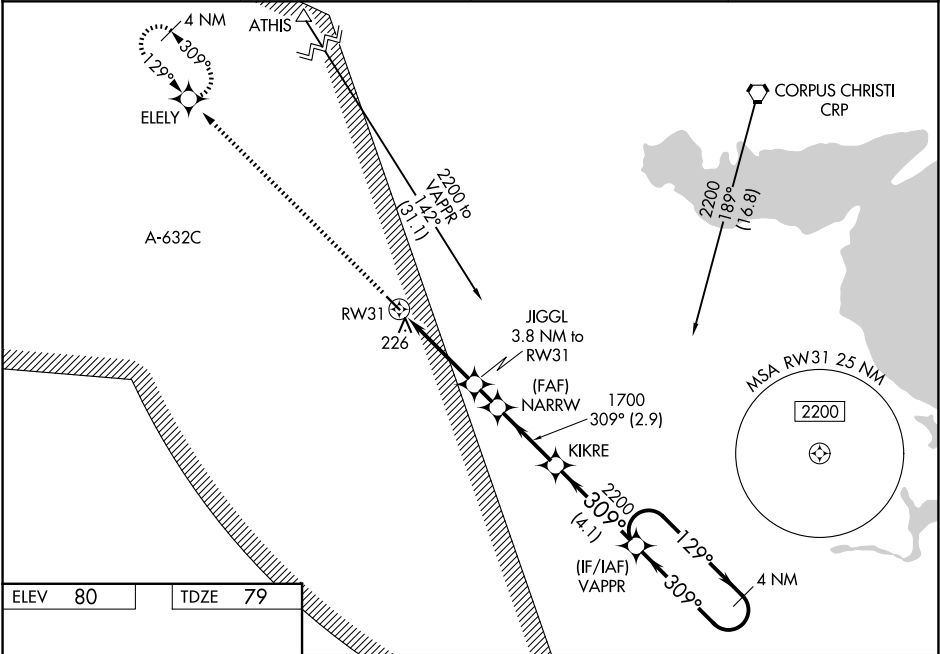
NUECES COUNTY (R.B.O)

⚠

For uncompensated Baro-VNAV systems, LNAV/VNAV NA below -15°C (5°F) or above 54°C (130°F). Circling NA northeast of Rwy 13-31. Baro-VNAV and VDP NA when using Corpus Christi Intl altimeter setting. Rwy 31 helicopter visibility reduction below ¾ SM NA. DME/DME RNP-0.3 NA. Procedure NA at night. When local altimeter not received, use Corpus Christi Intl altimeter setting and increase LPV DA to 357 feet, LNAV/VNAV DA to 398 feet and all MDA 40 feet, increase LNAV/VNAV all Cats visibility ⅛ SM.

MISSED APPROACH: Climb to 2000 direct ELEY and hold.

AWOS-3 <b>118.175</b>	CORPUS APP CON ★ <b>120.9 348.725</b>	CTAF <b>122.9</b>	<b>122.8 0</b>
--------------------------	--	----------------------	----------------



ELEV 80

TDZE 79

MRL Rwy 13-31 0

		<div>2000</div> <div>ELEY</div>				
			<div>NARRW</div>	<div>KIKRE</div>	<div>VAPPR</div>	<div>4 NM Holding Pattern</div>
		<div>*LNAV only.</div>	<div>*1.1 NM to RW31</div>	<div>1700</div>	<div>309°</div>	<div>129°</div>
		<div>RW31</div>	<div>JIGGL 3.8 NM to RW31</div>	<div>1320*</div>	<div>1700</div>	<div>2200</div>
		<div>1.1 NM</div>	<div>2.7 NM</div>	<div>1.2 NM</div>	<div>2.9 NM</div>	<div>4.1 NM</div>
CATEGORY	A	B	C	D		
LPV DA	329-1	250 (300-1)			NA	
LNAV/VNAV DA	370-1	291 (300-1)			NA	
LNAV MDA	480-1	401 (400-1)			NA	
CIRCLING	540-1	460 (500-1)			NA	