

APP CRS
133°

Rwy Ldg
TDZE
Apt Elev

3799
129
129

RNAV (GPS) RWY 13

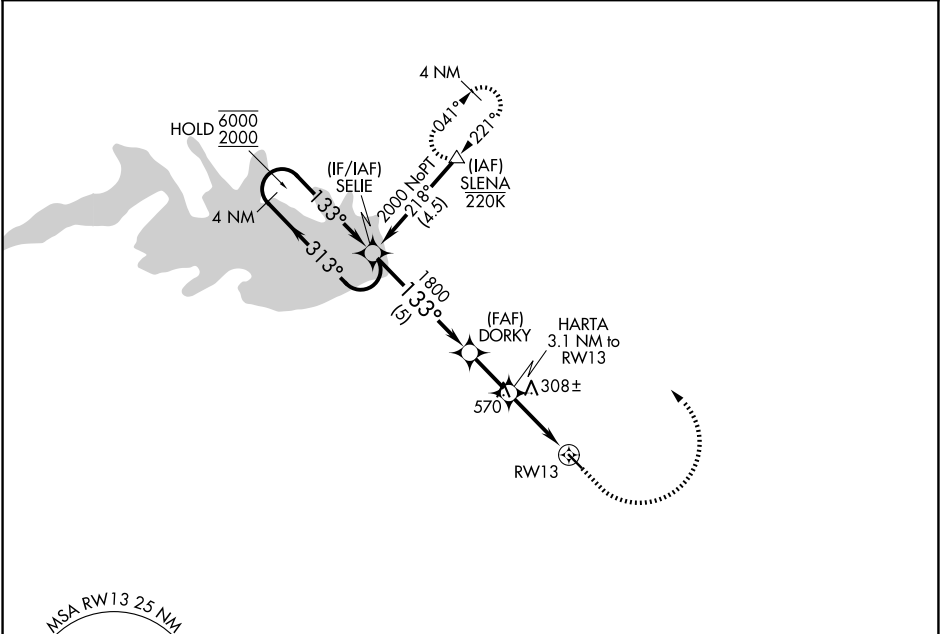
LIVE OAK COUNTY (8T6)

RNP APCH - GPS.

MISSED APPROACH: Climb to 700 then climbing left turn to 2000 direct SLENA and hold.

Rwy 13 helicopter visibility reduction below ¾ SM NA.

AWOS-3PT 119.05	HOUSTON CENTER 134.6 322.5	CTAF 122.9	122.7 0
--------------------	-------------------------------	---------------	---------



4 NM Holding Pattern

SELIE

DORKY

HARTA 3.1 NM to RW13

700 2000 SLENA

6000 2000

313° 133°

1800 1160

3.00° TCH 53

1.2 NM to RW13

RW13

5 NM 2 NM 1.9 NM 1.2 NM

CATEGORY	A	B	C	D
LNNAV MDA	560-1	431 (500-1)	560-1¼ 431 (500-1¼)	NA
CIRCLING	760-1	631 (700-1)	760-1¾ 631 (700-1¾)	NA

MIRL Rwy 13-31 0