

| | | | |
|-----------------|-------------|----------|------------|
| VORTAC EHF | APP CRS | Rwy Idg | N/A |
| 115.4 | 269° | TDZE | N/A |
| Chan 101 | | Apt Elev | 425 |

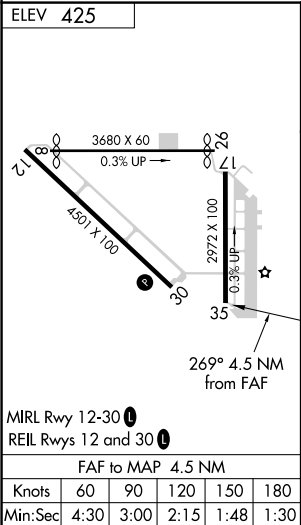
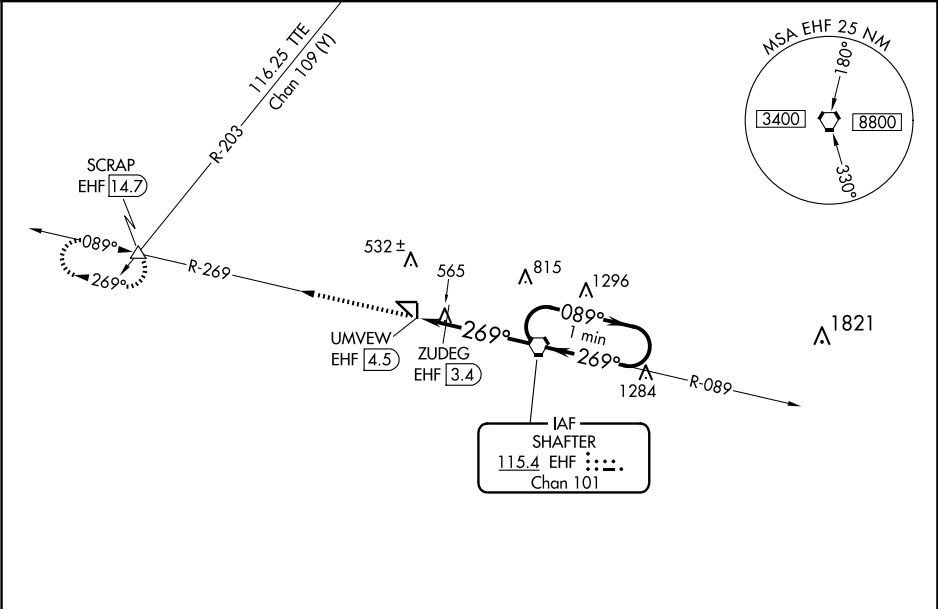
VOR-A

SHAFTER-MINTER FLD (MIT)

NA Circling to Rwy 17, 35, 8 and 26 NA at night. When local altimeter setting not received, use Bakersfield altimeter setting and increase all MDAS 40 feet and increase Cat C visibility to 1¾.

MISSED APPROACH: Climb to 4000 on EHF VORTAC R-269 to SCRAP INT/EHF 14.7 DME and hold, continue climb-in-hold to 4000.

| | | |
|--------------------------|--|----------------------|
| AWOS-3 121.125 | BAKERSFIELD APP CON ★ 126.45 270.3 | CTAF 122.9 |
|--------------------------|--|----------------------|



| | | | | | |
|-------------------------------------|--------|------------------------------|-------------|--|-------------------------|
| <div>4000 ↑ EHF R-269</div> | | <div>SCRAP △</div> | | <div>One Minute Holding Pattern</div> | |
| <div>EHF R-269</div> | | <div>ZUDEG EHF 3.4</div> | | <div>EHF VORTAC</div> | |
| <div>UMVEW EHF 4.5</div> | | <div>269°</div> | | <div>089° → 2900 ← 269°</div> | |
| <div>1000*</div> | | <div>2600</div> | | <div>*1040 when using Bakersfield altimeter setting.</div> | |
| <div>1.1 NM</div> | | <div>3.4 NM</div> | | | |
| CATEGORY | A | | B | | C |
| CIRCLING | 1000-1 | | 575 (600-1) | | 1000-1½ 575 (600-1½) |
| ZUDEG FIX MINIMUMS | | | | | |
| CIRCLING | 900-1 | | 475 (500-1) | | 940-1½ 515 (600-1½) |
| | | | | NA | |