

APP CRS
336°

Rwy Idg
TDZE
1207

Apt Elev
1210

RNAV (GPS) RWY 34
HAWLEY MUNI (Ø4Y)

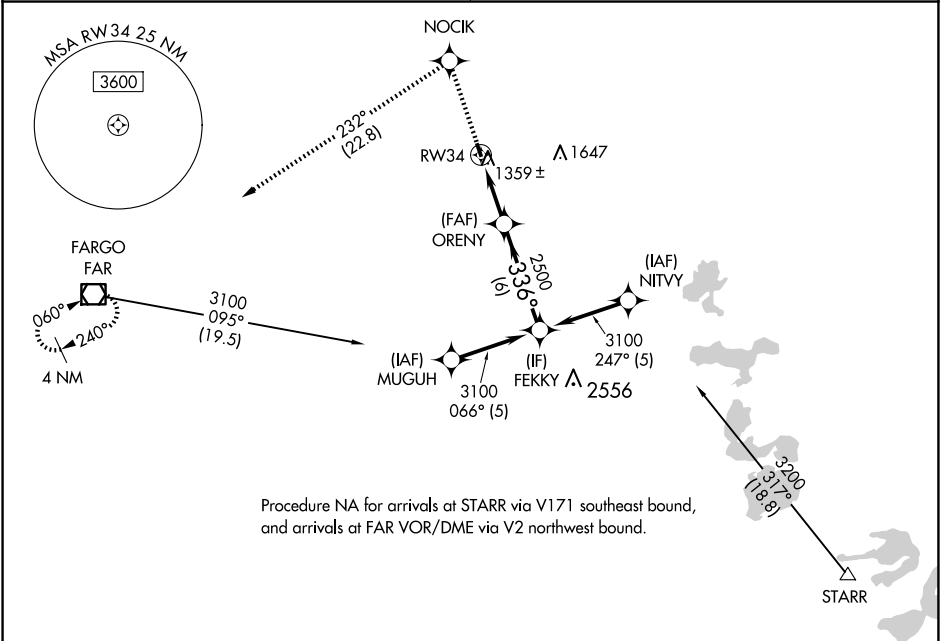
NA

DME/DME RNP-0.3 NA.
Use Fargo, ND altimeter setting.

MISSED APPROACH: Climb to 2700 direct NOCIK and left turn via 232° track to FAR VOR/DME and hold.

FARGO APP CON
120.4 377.15

UNICOM
122.8 (CTAF)



ELEV 1210

TDZE 1207

2700

NOCIK

232° tr

FAR

FEKKY

3100

ORENY

2500

336°

3.03° TCH 40

3.9 NM

6 NM

CATEGORY	A	B	C	D
LNNAV MDA	1700-1	493 (500-1)	1700-1¼ 493 (500-1¼)	NA
CIRCLING	1760-1	550 (600-1)	1980-2¼ 770 (800-2¼)	NA

MIRL Rwy 16-34

91

3360 X 75

0.03% UP

34

1257

336° to RWY 34