

WAAS CH 53420 W24A	APP CRS 241°	Rwy ldg TDZE Apt Elev	8120 6771 6814
--	------------------------	-----------------------------	---

RNAV (GPS) RWY 24

SIERRA BLANCA RGNL (SRR)

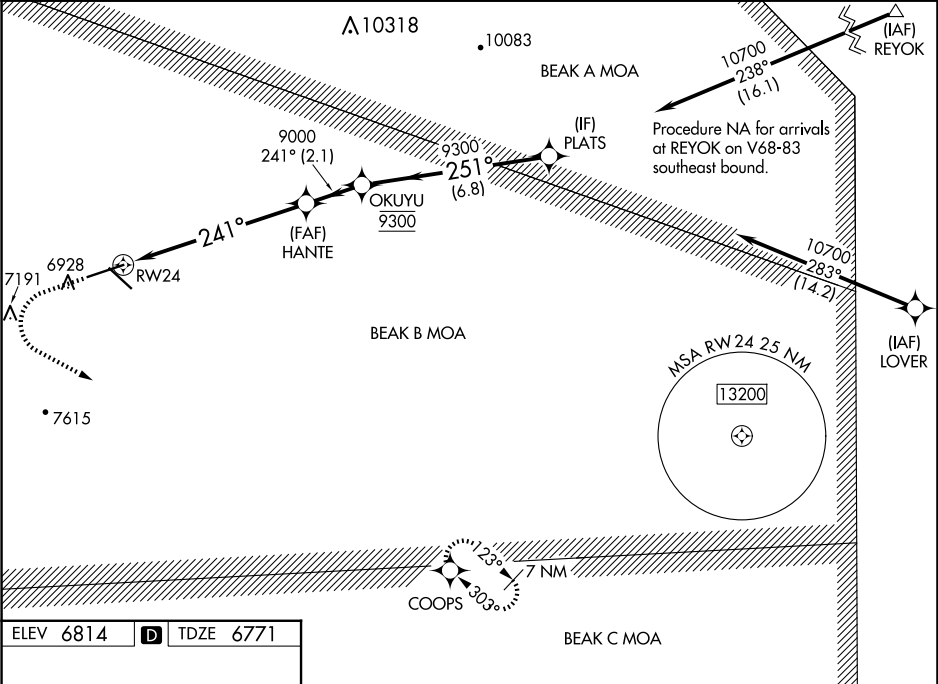
RNP APCH - GPS.

⚠

When local altimeter setting not received, procedure NA.
For uncompensated Baro-VNAV systems, LNAV/VNAV NA below -28°C or above 54°C. Circling Rwy 12 NA at night.

MISSED APPROACH: Climb to 7500 then climbing left turn to 10000 direct COOPS and hold.

AWOS-3 126.475	ALBUQUERQUE CENTER 132.65 257.6	UNICOM 122.8 (CTAF) 1
--------------------------	---	---------------------------------



ELEV 6814 D TDZE 6771

The diagram shows the runway layout and the approach path. The runway is 8120 ft x 100 ft. The approach path is shown with altitudes and distances. The path starts at the (FAF) HANTE (9000 ft) and proceeds on a 241° heading. Key waypoints include OKUYU (9300 ft) and PLATS (9300 ft). The path then turns to a 251° heading. A missed approach procedure is shown: climb to 7500 ft, then a climbing left turn to 10000 ft direct to the COOPS hold. The chart also shows the BEAK A, B, and C MOAs, the (IAF) REYOK, and the (IAF) LOVER. A circular MSA RWY 24 25 NM with a 13200 ft MSL is depicted. Various altitudes and distances are marked along the path.

REIL Rwy 12 and 30 1
MIRL Rwy 6-24 and 12-30 1

	7500	10000	COOPS				
				HANTE	OKUYU	PLATS	
				9000	9300	10700	
				241°	251°		
				1.9 NM to RW24			
				1.9 NM	5.1 NM	2.1 NM	6.8 NM
CATEGORY	A	B	C	D			
LPV DA	6971-3/4 200 (200-3/4)						
LNAV/VNAV DA	7220-13/8 449 (500-13/8)						
LNAV MDA	7380-1 609 (600-1)		7380-13/4 609 (600-13/4)				
CIRCLING	7380-1 566 (600-1)		7600-21/4 786 (800-21/4)		7860-3 1046 (1100-3)		