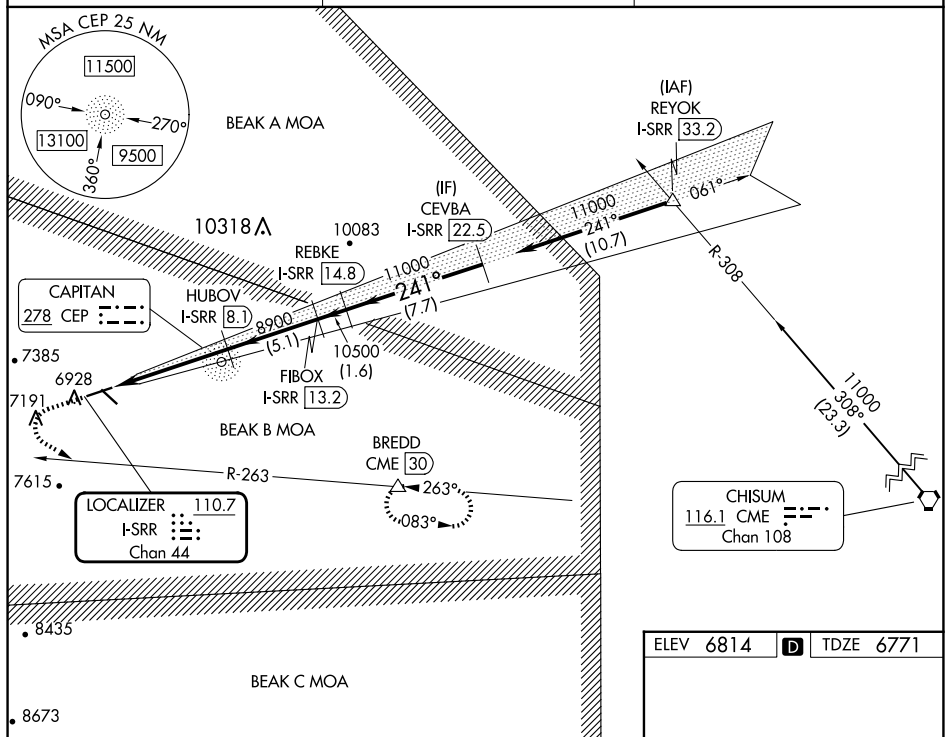


ILS or LOC RWY 24  
SIERRA BLANCA RGNL (SRR)

**T** Autopilot coupled approach NA below 7200. Circling  
**A** NA Rwy 12 NA at night. When local altimeter setting not  
received, procedure NA.

**MISSED APPROACH:** Climb to 7500 then climbing left turn to 11000 on heading 110° and on CME VORTAC R-263 to BREDD/CME 30 DME and hold, continue climb-in-hold to 11000.

AWOS-3 <b>126.475</b>	ALBUQUERQUE CENTER <b>132.65 257.6</b>	UNICOM <b>122.8 (CTAF) 0</b>
--------------------------	---	---------------------------------



7500 ↑	11000 hdg 110°	CME R-263	BREDD △	Use I-SRR DME when on the localizer course.			
CATEGORY	A		B		C		D
S-ILS 24	6974-3/4 203 (200-3/4)						
S-LOC 24	7340-1 569 (600-1)			7340-1 5/8 569 (600-1 5/8)			
CIRCLING	7340-1 526 (600-1)			7600-2 1/4 786 (800-2 1/4)		7860-3 1046 (1100-3)	

ELEV 6814
D
TDZE 6771

REIL Rwys 12 and 30

MIRL Rwys 6-24 and 12-30

FAF to MAP 6.6 NM					
Knots	60	90	120	150	180
Min:Sec	6:36	4:24	3:18	2:38	2:12