

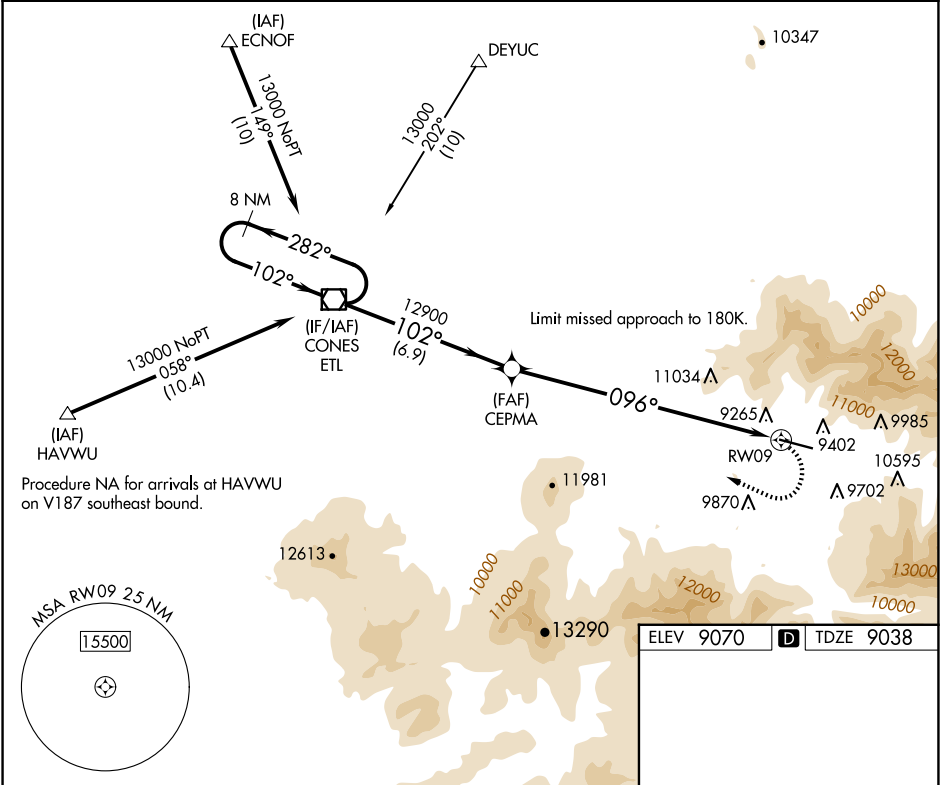
WAAS CH <b>82637</b> <b>W09B</b>	APP CRS <b>096°</b>	Rwy Ldg TDZE <b>9038</b> Apt Elev <b>9070</b>
--	------------------------	---

RNAV (GPS) Z RWY 9

TELLURIDE RGNL (TEX)

<div><div><div>⚠</div><div>⚠</div><div>⚠</div></div><div><div>-17°C</div></div></div> <div><div>Circling NA at night. When local altimeter setting not received, procedure NA.</div><div>Circling NA north of Rwy 9-27. DME/DME RNP-0.3 NA.</div><div>*Missed approach requires a minimum climb of 380 feet per NM to 12500; if unable to meet climb gradient, see RNAV (GPS) Y RWY 9.</div></div> <div><div>MISSED APPROACH: Climbing right turn to 15000 direct ETL VOR/DME and hold, continue climb-in-hold to 15000.</div></div>
--

AWOS-3 <b>118.325</b>	DENVER CENTER <b>125.35 354.05</b>	UNICOM <b>123.0 (CTAF) 1</b>
--------------------------	---------------------------------------	---------------------------------



8 NM Holding Pattern		ETL VOR/DME	CEPMA	15000	ETL
13000		282°	102°	3.59° TCH 46	096°
6.9 NM		10 NM		RWY 09	
CATEGORY	A	B	C	D	
LP MDA*	10640-1¼ 1602 (1600-1¼)	10640-1½ 1602 (1600-1½)	10640-3 1602 (1600-3)	NA	
CIRCLING	11640-1¼ 2570 (2600-1¼)	11640-1½ 2570 (2600-1½)	11640-3 2570 (2600-3)	NA	

HIRL Rwy 9-27 1

REIL Rws 9 and 27 1